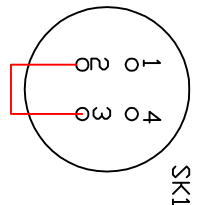
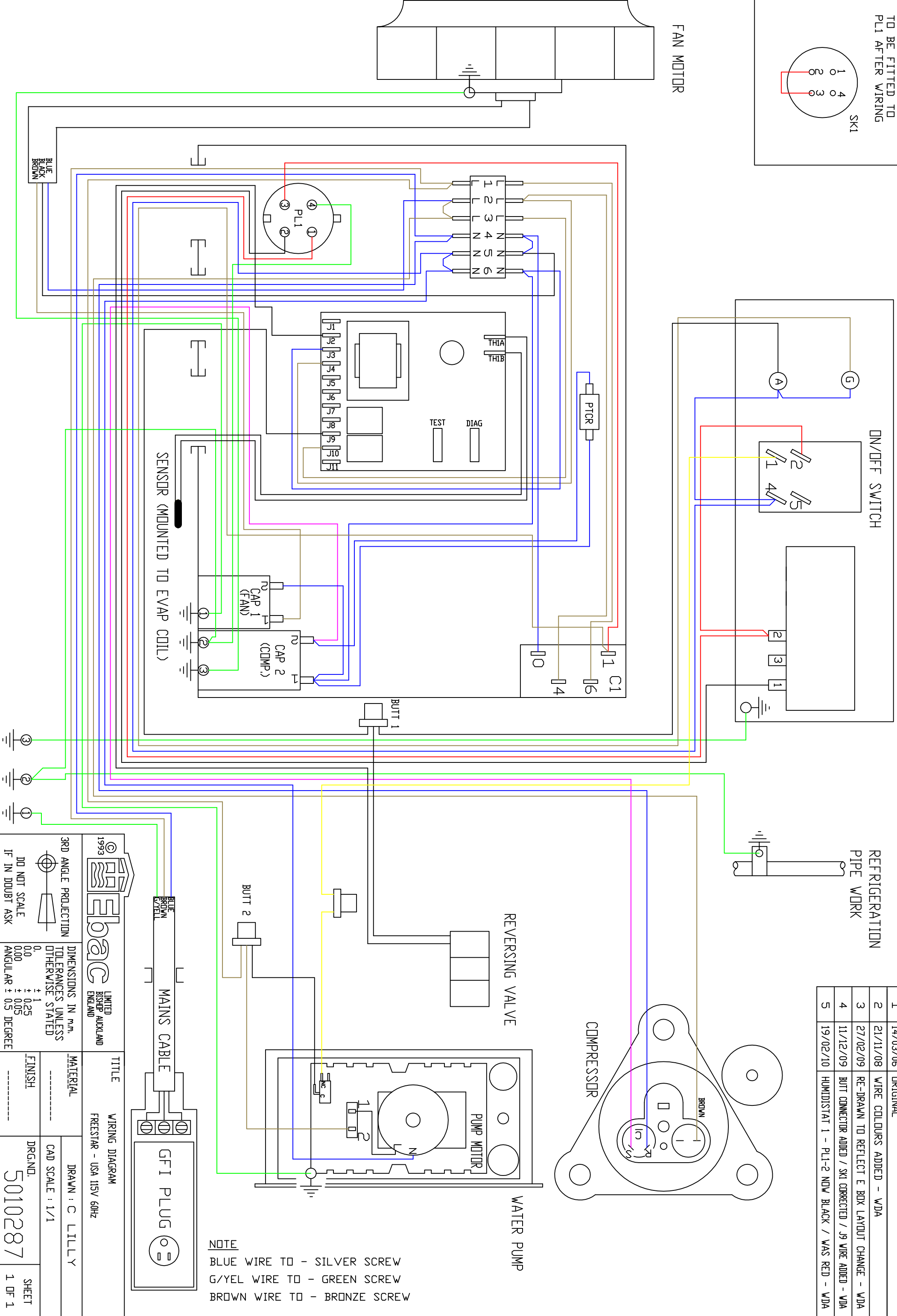


SK1 = FREE SOCKET  
TO BE FITTED TO  
PL1 AFTER WIRING



VIEWED FROM THE WIRING SIDE CONTROL PANEL



ISSUE	DATE	AMENDMENTS
1	14/03/06	ORIGINAL
2	21/11/08	WIRE COLOURS ADDED - VDA
3	27/02/09	RE-DRAWN TO REFLECT E BOX LAYOUT CHANGE - VDA
4	11/12/09	BUT CONNECTOR ADDED / SK1 CORRECTED / J9 WIRE ADDED - VDA
5	19/02/10	HUMIDISTAT 1 - PL1-2 NOW BLACK / WAS RED - VDA

**NOTE**  
 BLUE WIRE TO - SILVER SCREW  
 G/YEL WIRE TO - GREEN SCREW  
 BROWN WIRE TO - BRONZE SCREW

1993 **REBOCC** LIMITED BISHOP AUCKLAND ENGLAND

3RD ANGLE PROJECTION  
 DD NOT SCALE  
 IF IN DOUBT ASK

DIMENSIONS IN mm.  
 TOLERANCES UNLESS OTHERWISE STATED

0.0	± 0.25
0.00	± 0.05
ANGULAR	± 0.5 DEGREE

TITLE: WIRING DIAGRAM  
 MATERIAL: FREESTAR - USA 115V 60Hz  
 DRAWN: C LILLY  
 CAD SCALE: 1/1  
 FINISH: -----  
 DRG.ND: 5010287  
 SHEET: 1 OF 1