

Split System Submittal Data

Indoor: **CS-KE18NB4UW**

Multi System Indoor Units - Ceiling Recessed

Job Name: _____

Location: _____

Engineer: _____

Submitted to: _____

Submitted by: _____

Reference: _____

Approval: _____

Date: _____

Construction: _____

Unit#: _____

Drawing#: _____



General Data	
Power (V/P/Hz)	208 - 230/1/60
Circuit Ampacity (A)	N/A
Fuse Size, Max.(A)	15
Running Amps (A)	[COOL] .16 / .15 [HEAT] .2 / .19
Power Input (W)	[COOL] 22 / 22 [HEAT] 27 / 27
Indoor Unit	Cool/Heat
Fan type	Turbo
Dia & Length (in.) - No. Speeds	D12-5/8 L5-3/4 x 1
No. Speeds	3 & Auto
No. Poles (RPM, High)	8 - 650/720
No. Motors (W)	1-[20]
CFM (HI)	341/383
Operation Sound (HI/Med/Lo) dB-A	44/40/36
Coil Type	Aluminum Plate Fin & Copper Tube
Fin Type - Pipe Type	Slit Plate - Inner Rifled
Rows - F.P.I.	2 - 18.1
Face Area (sq.ft.)	2.94
Tube Size (in)	N/A
Drain Connection Size	3/4
Refrigerant	R410A
Line Size (in. O.D. Discharge)	1/4" (Flare)
Line Size (in. O.D. Suction)	1/2" (Flare)
Dimensions (HxWxD)	
Indoor Unit (Crated) (in.)	11-13/32 x 24-13/16 x 28-1/8
Indoor Unit (Uncrated) (in.)	12-5/16 x 24-19/32 x 24-19/32
Weight (lbs.)	
Net, Indoor (lbs.)	35.3
Shipping, Indoor (lbs.)	41.9
Shipping Volume (cu.ft.)	4.59

Performance Data @ ARI Standard Conditions (230V)	
Cooling	
Total Capacity (BTU/H)	17,500
Moisture Removal (HI, Pint/H)	4.89

Heating	
Total Capacity (BTU/H)	20,400

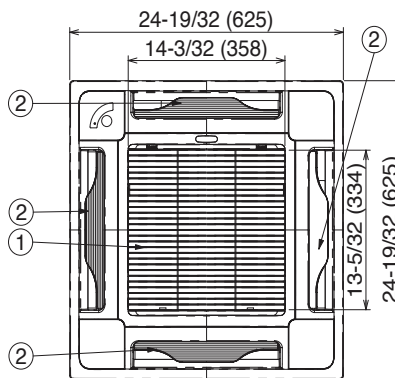
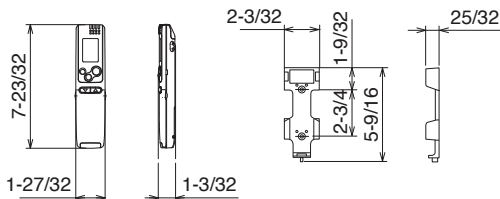
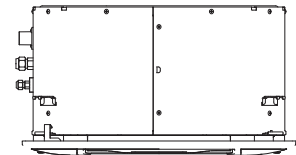
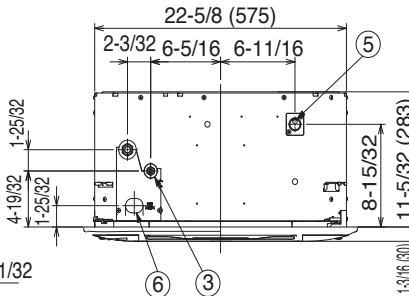
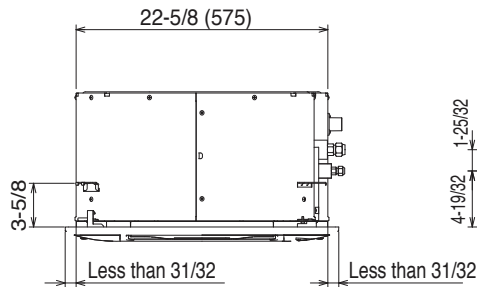
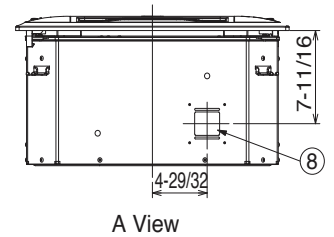
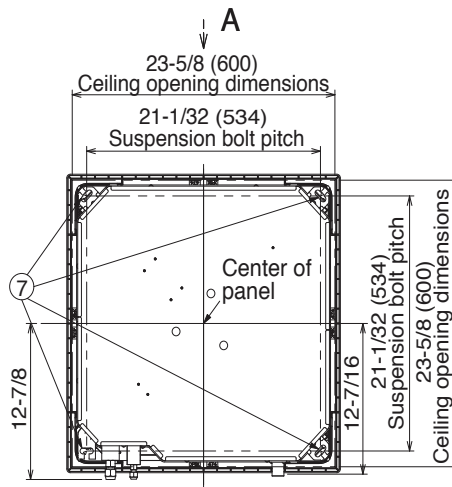
Features	
Controls	Microprocessor
Remote Control	LCD Wireless Type, Temp. Sensor Built In
Temperature Control	IC Thermostat
Timer	24 Hr. Program, 1 Hr. Off
Night Setback	Built-In
Air Louver	Automatic
Power Failure Automatic Restart	Built-In
Self-Diagnosis	Built-In
Quiet Operation	Built-In
Air Filter	Washable, Anti-Mold

Dimensions	
Option	
Refrigerant Line Set	Available
Fresh Air Intake	Knock-out
Airduct Extension	N/A
Condensate Drain Pump	Standard
Hard Wired Remote Controller	Available
Non-Removeable Remo-con Bracket	Available

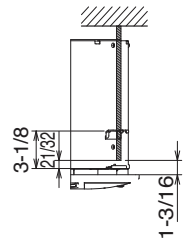
Operating Range	Indoor Air Intake Temp	Outdoor Air Intake Temp
Cooling (Max)	95F DB/71F WB	115F DB
Cooling (Min)	67 DB/57F WB	14F DB
Heating (Max)	80F DB/67F WB	75F DB/65F WB
Heating (Min)	-DB/-WB	0F DB

Indoor Dimensions

①	Air intake
②	Discharge outlet
③	Refrigerant tubing (liquid tube) dia. 1/4" (flared)
④	Refrigerant tubing (gas tube) dia. 1/2" (flared)
⑤	Drain tube connection port VP20 (outer dia. 1")
⑥	Power supply port
⑦	Suspension bolt hole (4 - 1/2" x 1-1/8" hole)
⑧	Fresh air intake duct connection port (dia. 3-7/8")



The length of the suspension bolts should be selected so that there is a gap of 1-3/16" or the ceiling (21/32" or more below the lower surface of the main unit), as shown in the figure at right. If the suspension bolts is too long, it will contact the ceiling panel and the unit cannot be installed.



Unit : inch (mm)

