

## Split System Submittal Data

System: **36PEF1U6** Indoor: **S-36PF1U6** Outdoor: **U-36PS1U6**

Single Split System - Concealed Duct Heat Pumps

Job Name: \_\_\_\_\_  
 Location: \_\_\_\_\_  
 Engineer: \_\_\_\_\_  
 Submitted to: \_\_\_\_\_  
 Submitted by: \_\_\_\_\_  
 Reference: \_\_\_\_\_

Approval: \_\_\_\_\_  
 Date: \_\_\_\_\_  
 Construction: \_\_\_\_\_  
 Unit#: \_\_\_\_\_  
 Drawing#: \_\_\_\_\_

General Data	
<b>Power (V/P/Hz)</b>	<b>230/208/1/60</b>
Circuit Ampacity (A)	15-35 Indoor-Outdoor
Fuse Size, Max.(A)	15-35 Indoor-Outdoor
<b>Compressor</b>	<b>DC Rotary Inverter</b>
No. Used	1
R.L. Amps - L.R. (A)	16.4 - 17.5
Outdoor Unit	
Fan type	Propeller
Dia & Length (in.) - No. used	18-7/64-1
Type Drive - No. Speeds	DC Motor
No. Poles (RPM)	8 - 830
No. Motors (W)	1 - 90
CFM (High)	1942
F.L. Amps (A)	17.3
<b>Coil Type</b>	<b>Aluminum Fin &amp; Copper Pipe</b>
Fin Type - Pipe Type	Slit Plate - Inner Rifled
Rows - F.P.I.	2 - 14.1
Face Area (sq.ft.)	7.26
Tube Size (in)	3/8"
Indoor Unit	
Fan type	Centrifugal
Dia & Length (in.) - No. used	5-29/32-3
No. Speeds	3 & Auto
No. Poles (RPM, High)	4 - 940
No. Motors (W)	1 - 100
CFM (Hi/Med/Lo)	1060/920/750
Indoor Sound Rating (Hi) (dB-A)	38
F.L. Amps (A)	1.0
<b>Coil Type</b>	<b>Aluminum Plate Fin &amp; Copper Tube</b>
Fin Type - Pipe Type	Slit Plate - Inner Rifled
Rows - F.P.I.	3 - 12.7
Face Area (sq.ft.)	3.32
Tube Size (in)	3/8"
Drain Connection Size (in.)	1-17/64"



<b>Refrigerant</b>	<b>R410A</b>
Lbs. - R410a	6.17
Control	Electric Expansion Valve
Connection	Flare
Line Length, Max (ft.)	165
Line Difference, Max (ft.)	50 (outdoor lower), 100 (outdoor higher)
Line Size (in. O.D. Discharge)	3/8"
Line Size (in. O.D. Suction)	5/8"
<b>Dimensions (HxWxD)</b>	
Indoor Unit (Crated) (in.)	14-3/32 x 65-25/32 x 30-13/16
Indoor Unit (Uncrated) (in.)	12-7/32 x 58-9/32 x 24-13/16
Outdoor Unit (Crated) (in.)	34-31/32 x 39-31/32 x 16-3/32
Outdoor Unit (Uncrated) (in.)	30-23/32 x 37 x 13-3/8
<b>Weight (lbs.)</b>	
(Indoor) Net	104
(Indoor) Shipping	115
(Outdoor) Net	143
(Outdoor) Shipping	161
(Indoor) Shipping Volume (cu.ft.)	16.5
(Outdoor) Shipping Volume (cu.ft.)	13

### Performance Data @ ARI Standard Conditions (230/208V)

Cooling	
Total Capacity (BTU/H)	31,200 (9,500 - 31,200)
Sensible Capacity (BTU/H)	19,570
Latent Capacity (BTU/H)	11,630
SEER	13.9
Dehumidification (Pints/H)	10.0
Amps (A)	18.6/20.6
Power Inputs (W)	3,920/3,920
Outdoor Sound Rating (dB-A) High	52
Heating	
Total Capacity (BTU/H)	37,400 (8,000 - 37,400)
HSPF	9.6
Amps (A)	15.6/17.3
Max Amps (A)	15.6/17.3
Power Inputs (W)	3,250/3,250
Back-up Strip Heater (KW)	N/A
Outdoor Sound Rating (dB-A) High	52

### Features

Controls	Microprocessor
Remote Controller	(Wired Remote Included) (Wireless Remote Optional)
Temperature Control	IC Thermostat
Timer	72 Hr. On/Off
Night Setback	N/A
Air Louver, Horizontal	N/A
Air Louver, Vertical	N/A
Power Failure Automatic Changeover	Built-In
Heating/Cooling Automatic Changeover	Built-In
Self-Diagnosis	Built-In
Air Filter	Field Supplied

### Option

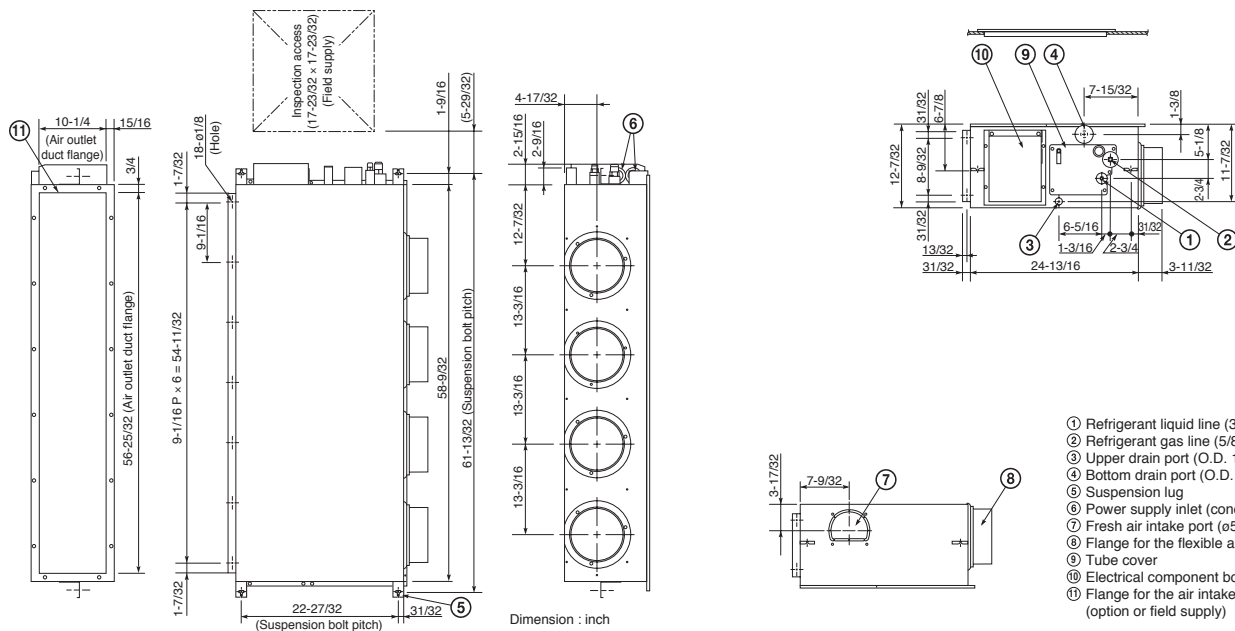
Refrigerant Line Set	Available
Fresh Air Intake	N/A
Air duct Extension	N/A
Indoor Frame Extension	N/A
Condensate Drain Pump	Built In (Limited Vertical Lift)
Non-Removeable Locking Remo-con Bracket	Available

### Operating Range

Operating Range	Indoor Air Intake Temp	Outdoor Air Intake Temp
Cooling (Max)	95F DB/71F WB	115F DB
Cooling (Min)	67 DB/57F WB	0F DB
Heating (Max)	80F DB/67F WB	75F DB/65F WB
Heating (Min)	-DB/-WB	5F DB

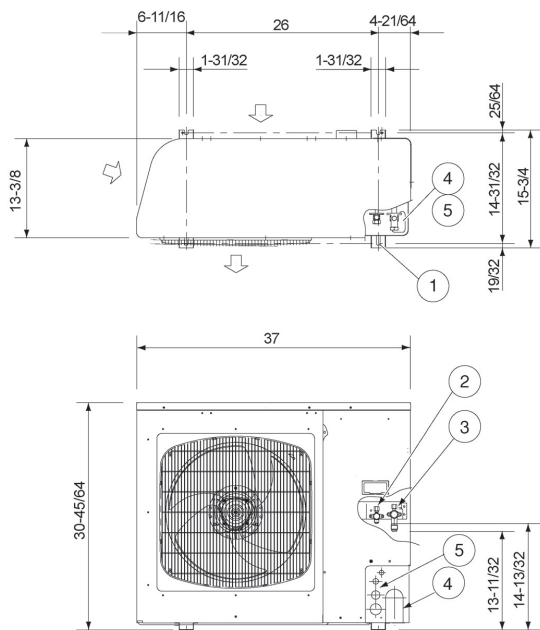


# Indoor Dimensions

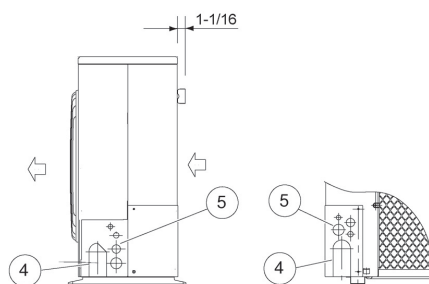


1915\_U-1

# Outdoor Dimensions



- ① Hole for anchor bolt (4-R6.5) / Anchor bolt: M10
- ② Refrigerant tube joint (liquid line tube) • Flare connection 3/8 in (9.52 mm)
- ③ Refrigerant tube joint (gas line tube) • Flare connection 5/8 in (15.88 mm)
- ④ Refrigerant tubing inlet (knock-out hole)
- ⑤ Power supply inlet (knock-out hole ø38, ø29, ø19, ø16 mm)



Dimension : inch

