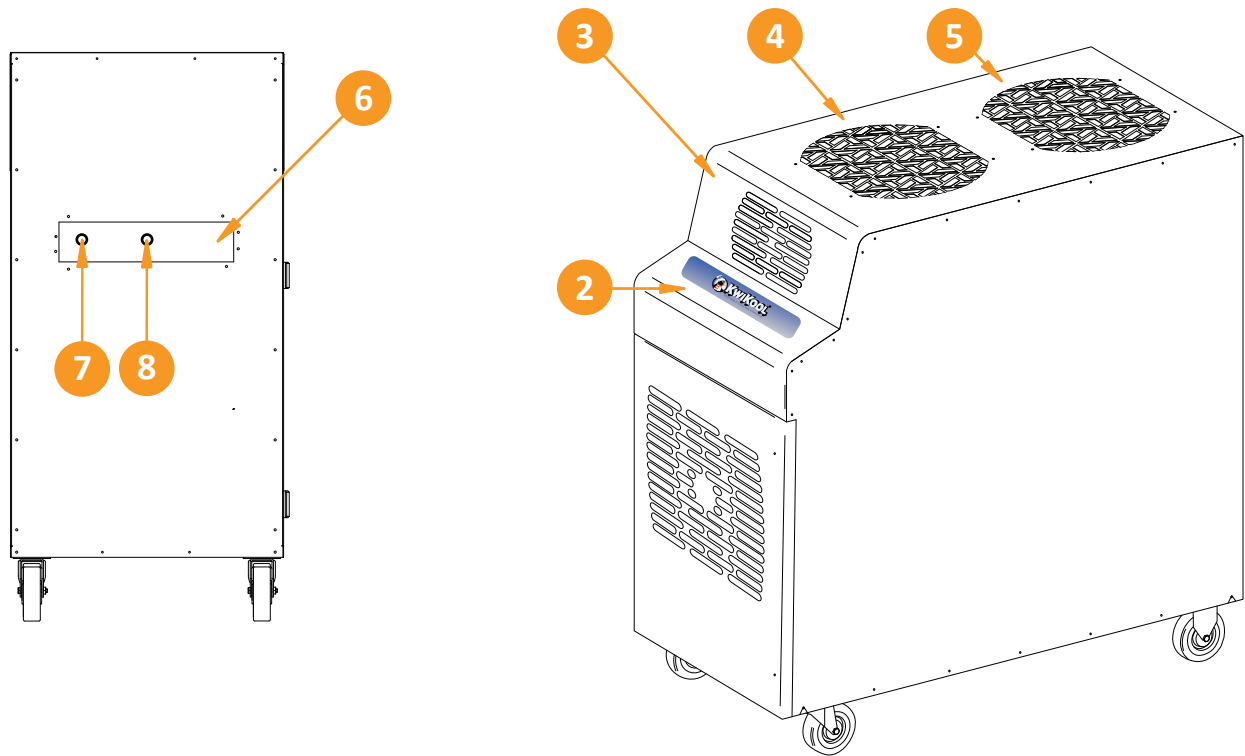
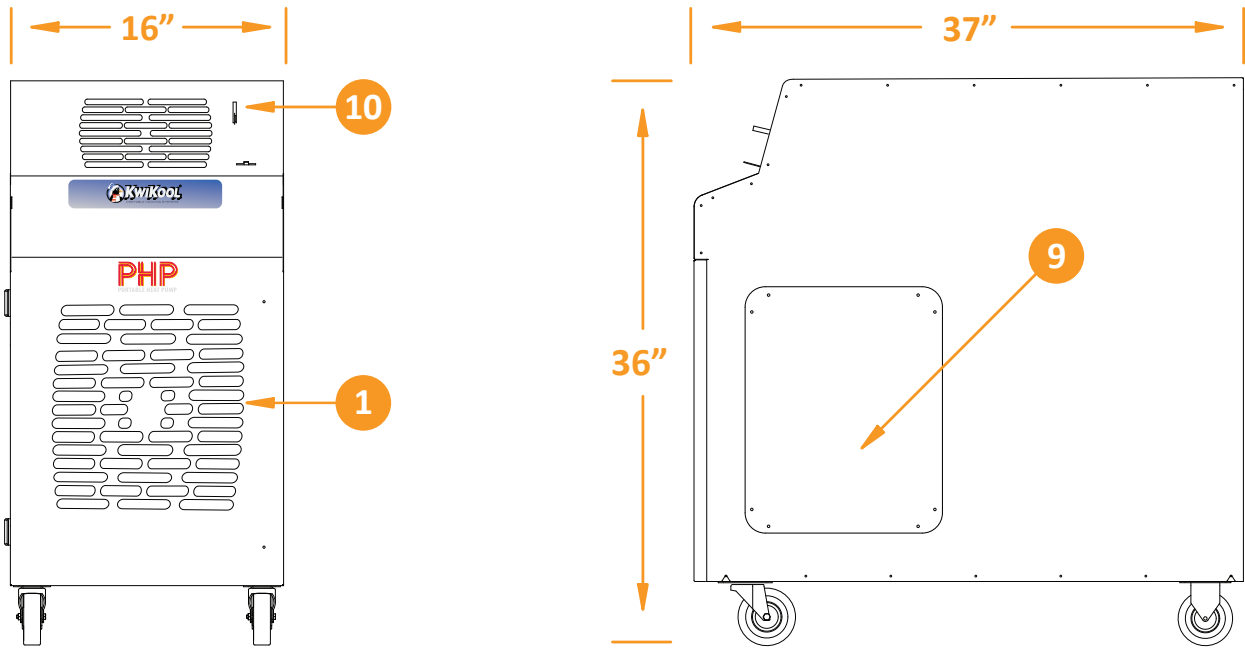


PHP

PORTABLE HEAT PUMP



KPHP1811

- 1. Cold Air Return
- 2. Control Pad
- 3. Air Supply
- 4. Vent Control
- 5. Access Door
- 6. Cord Storage
- 7. Condensate Alarm Jack
- 8. Condensate Nipple
- 9. Condenser Air Inlet
- 10. Vent Control

CAPACITY

HEATING	BTU/hr @95 F at 60%RH	17,010 / 1.8 Ton
COOLING	BTU/hr @95 F at 60%RH	13,850 / 1.5 Ton

COMPRESSOR

Compressor Type	Hermetic Rotary
Operating Cooling Temp	60-110°F 50% RH
Operating HeatingTemp	40-80°F 50% RH
Non-CFC Refrigerant	410A

EVAPORATOR FAN

Fan Type (Centrifugal)	Direct Drive
Air Flow (CFM)	460
Supply Air Data	Adjustable Vent
Supply Air Chute Data (Optional)	2 - 5" dia x 12" length

CONDENSER FAN

I/O Integral Condenser - In/Out	Balanced Air Flow
Fan Type (Centrifugal)	Direct Drive
Air Flow (CFM)	700
Optional Condenser Duct	2 - 12" dia x 8" length
Maximum Duct Length	25'

ELECTRICAL

Power Supply (Volts)	115 V / Single Phase
Current Consumption (Amps)	11.5 Cooling / 14.7 Heating
Power Consumption (kW)	1.35
Maximum Circuit Breaker (Amps)	20
Recommended Breaker Size	15
Minimum Circuit Ampacity (Amps)	18.075
Min/Max Voltage	105 - 125
Power Cord Gauge / Length in Feet	14 AWG / 6'
Plug Configuration	NEMA 5 - 20

DIMENSIONAL

Width x Length x Height (inches)	16.325" x 36" x 37.25"
Weight (lbs)	221
Shipping Weight (lbs)	271
Ceiling Kit CK-12 Weight (lbs)	38
Shipping Weight with Ceiling Kit (lbs)	309

SAFETY DEVICE

Compressor Overload	Internal
Fan Motor Overload	Automatic Internal
Evaporator Freeze-up	Hot Gas Bypass
High Pressure Switch	Manual
Low Pressure Switch	Auto
Compressor Short Cycle	Yes
Automatic Restart	Yes
Condensate Pump Safety Cut-off	Yes
Condensate Tank Overflow	Yes
Thermostat Type	Digital Microprocessor