

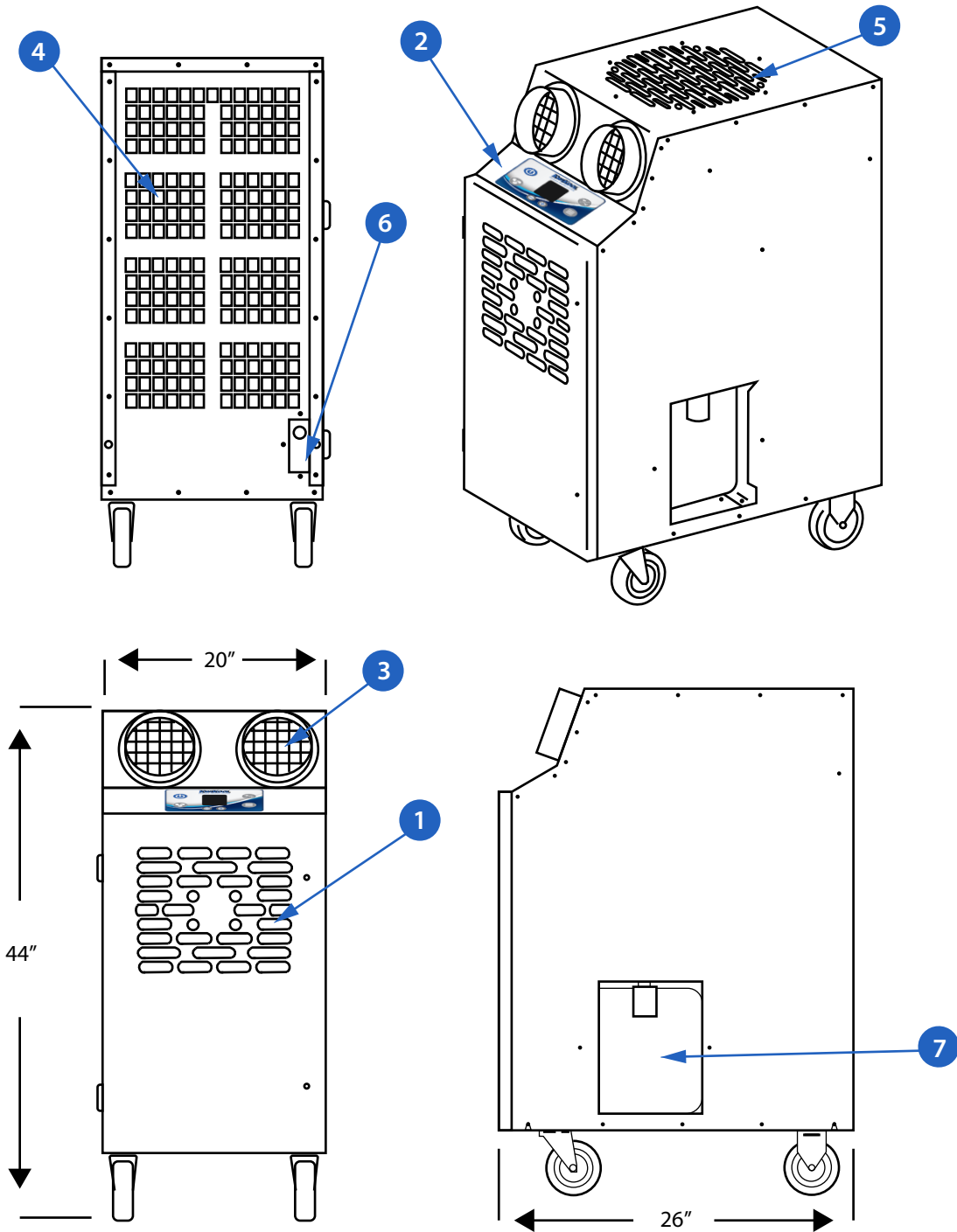
KPAC II

SPECIFICATIONS

KPAC2411-3

COOLING CAPACITY	BTU/hr @ 95F at 60% RH	22,700
COMPRESSOR DATA	Compressor Type	Hermetic Rotary
	Operating Temperatures	70-105 F 50%RH
	Refrigerant	R 454 B
FAN DATA Evaporator	Fan Type (Centrifugal)	Direct Drive
	Air Flow (CFM)	725/Single Speed
	Supply Air Device	2 - 6" Dia. x 18" Air Chute
Condenser	Fan Type (Centrifugal)	Direct Drive
	Air Flow (CFM)	1050
	Condenser Duct Specs (optional)	1 - 14" Dia. x 8' Length
	Condenser Duct Max. Length	25'
ELECTRICAL DATA	Power Supply (Volts)	115/ Single Phase
	Current Consumption (Amps)	18.35
	Power Consumption (kW)	2.0
	Maximum Circuit Breaker (Amps)	20
	Recommended Breaker Size (Amps)	20
	Minimum Circuit Ampacity(Amps)	19.9
	Power Cord Gauge/Length	12AWG/7'
	Plug Configuration	NEMA 5-20
DIMENSIONAL DATA	Width x Depth x Height (Inches)	20" x 26" x 44"
	Weight (Lbs.)	206
	Shipping Weight (Lbs.)	266
	Ceiling Kit Weight (Lbs.)	24
	Shipping Weight w/ Ceiling Kit	290
SAFETY DEVICE DATA	Compressor Overload	Internal
	Fan Motor Overload	Automatic Internal
	Compressor Short Cycle	Yes
	Automatic Restart	Yes
THERMOSTATE	Condensate Tank Overflow	Yes

KPAC II



KPACII 2411-3

LEGEND

- | | |
|------------------------|-------------------------|
| 1. Cold Air Return | 5. Condenser Air Outlet |
| 2. Control Pad | 6. Power Cord |
| 3. Cold Air Supply | 7. Condensate Tank |
| 4. Condenser Air Inlet | |



KWIKOOL.COM