



Service Kit

Back Panel Replacement for LGR 7000XLi Dehumidifier

LEGEND BRANDS, INC.

15180 Josh Wilson Road, Burlington, WA 98233

Phone: 800-932-3030 LegendBrands.com

Description

This kit includes parts and instructions for replacing the back panel of the LGR 7000XLi dehumidifier.

Recommended Tools:

Ratchet with an extension

3/8" socket

5/16" socket

11/32" socket

10mm socket

Philips head screwdriver

Drill

1/4" drill bit

Rivet gun

IMPORTANT: BEFORE WORKING ON UNIT PERFORM THE FOLLOWING

Drain system

Disconnect from power



WARNING Risk of electric shock. Disconnect unit from power before servicing.

Depending on the age of the unit the location of where the power cord attaches to the back panel and the type of control panel varies. Some steps in the instruction will vary depending on the age of the unit.

Using a Philips head screwdriver, remove the four screws securing the control panel. The unit will have one of the two controllers shown.



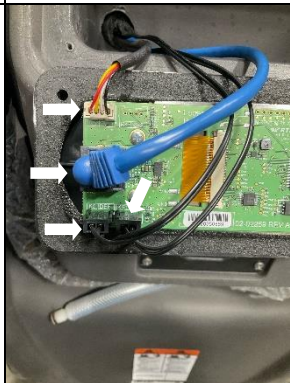
The control panel shown in the photo is the Command Hub.

Pull the control panel free from the back panel.

If the sensor cable plug attached to the K5 DEF connector is not identified with silver marking, mark the connector to distinguish it from the other sensor cable plug.

Newer style sensors will have a label with “DEF” text rather than silver marking.

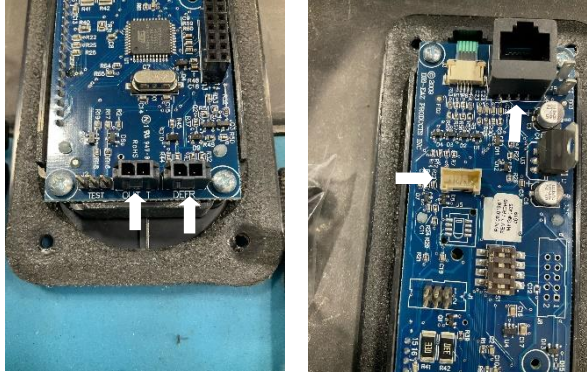
Disconnect the four cables attached to the back of the controller, depressing connector latches as needed. Set the control panel aside for later steps.



Similar to the Command Hub, units with the I-series control panel need to have the sensor cable plug attached to the DEFR connector marked if it does not already have silver marking.

disconnect the four cables at the connector locations shown.

Newer style sensors will have a label with “DEF” text rather than silver marking.



Place a small container underneath the drain plug at the bottom of the unit and use a 3/8” socket to remove the drain plug to drain out any remaining water in the unit.

Reinstall the drain plug or set it aside for later steps.



Rotate the unit forward on to the floor to access the electrical box. Depending on the age of the unit, the electrical box may not match the one shown in the photo.

Depending on the size of screws used, use a 3/8” or 10mm socket to remove the five screws securing the back panel to the base of the unit.



Use a 5/16” socket to remove the four screws securing the electrical box.



Rotate the electrical box to access the wiring. Use a Philips head screwdriver to remove the clamp securing the wire bundle.

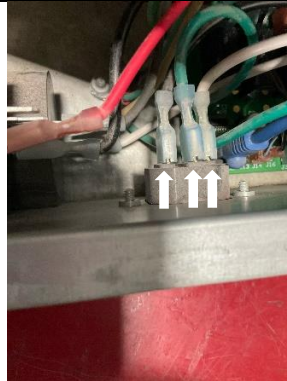


Depress latch of the Cat5 data cable and remove it from the connector.



For units with a power cord receptacle in the electrical box, disconnect all lead wires from the receptacle terminals.

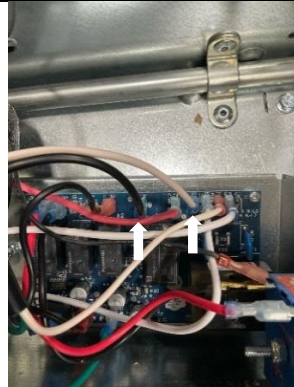
Disconnect the other ends of the black and white lead wires from the terminals on the PCBA and remove the lead wires. The lead wires will be replaced by the new power cord and will no longer be needed.



Using a Philips head screwdriver, remove the two screws securing the power cord receptacle and remove the receptacle from the electrical box. Use the same screws to mount the provided cover plate to the outside of the electrical box.

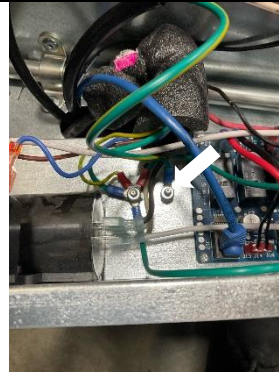


For units without a power cord receptacle in the electrical box, disconnect black and white power cord lead wires from the J1 and J2 terminals on the PCBA.



Using an 11/32" socket, remove the nut securing the power cord ground lead wire and pull the ground lead wire off the ground stud.

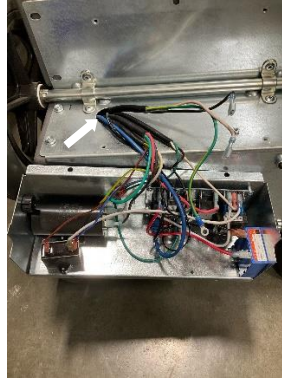
For electrical boxes with a power cord receptacle, remove the ground lead wire after pulling it from the ground stud. The ground lead wire will be replaced with the new power cord ground lead wire and not needed.



For the electrical box without the power cord receptacle, push the power cord lead wires already disconnected from the PCBA through the hole in the metallic base.

For both styles of electrical boxes, push the Cat5 cable disconnected from the PCBA through the hole in the metallic base.

Reposition the electrical box back to its original location and secure in place by hand tightening the screws. The electrical box will need to be removed again at a later step.



Reposition the unit to a vertical position and remove the top two screws securing the back panel using a 10mm or 3/8" socket depending on the size of screws to be removed.

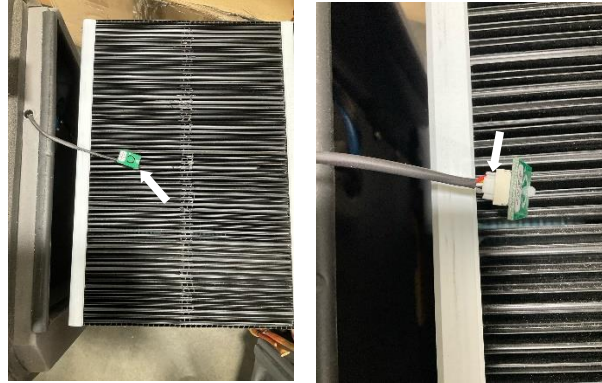


Depending on the size of screws to be removed, use a 10mm or 3/8" socket to remove the two screws securing the top panel housing part and remove it from the unit.



With the RH sensor PCBA and cable accessible, pull the PCBA free from the hole in the heat exchanger block.

Depress the latch on the RH sensor cable plug and separate it from the RH sensor PCBA. Set the RH sensor PCBA aside to use at a later step.



Depending on the size of screws to be removed, use a 10mm or 3/8" socket to remove the remaining four screws securing the back panel in place.



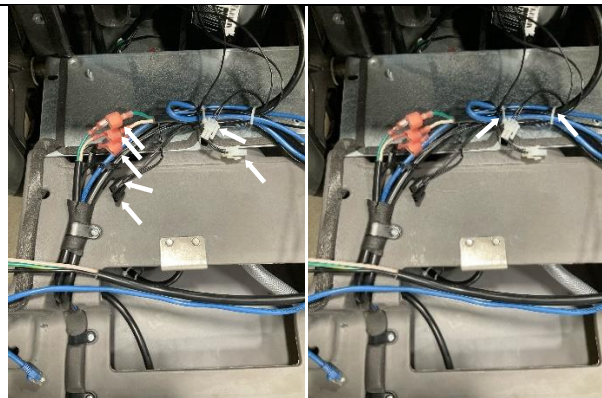
Pull the back panel free from the unit and lay it flat on the floor.

Pull the Cat5 and power cord cable free from the bottom of the unit.



Separate the sensor, pump, and pump float switch lead wires at the interconnection points. Ensure one of the sensor plugs is identified with silver marking.

Cut and remove the cable ties securing the wire and cable bundle.

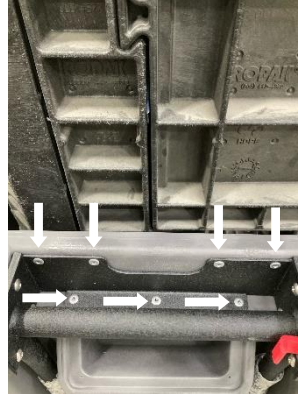


Remove the original back panel from the unit.

Using the drill and 1/4" drill bit, drill out the seven rivets securing the handle to the original back panel.

Use the rivet gun and rivets provided to attach the handle to the new back panel.

The four shorter rivets are used near the top of the back panel and the three longer rivets are used above the opening for the Command Hub or I-series control panel.



Set the original back panel next to the new back panel to transfer remaining parts.

Pull the RH sensor plug and remaining wire bundle free from the two holes near the top of the back panel. The original cork tape and foam gasket material can be discarded with new material provided with the kit.

Use a Philips head screwdriver to remove the screws passing through the plastic clamps that hold the wire bundle in place. Keep the screws, plastic clamps, and wire bundle for a later step.



Press latch on pump quick disconnect fitting and pull drain hose free from pump. A new drain hose with fittings is provided with the kit and the original drain hose will no longer be needed.



Pull the pump and float switch cables through the hole in the back panel.

Use a 5/16" socket to remove the two screws securing the pump.

Remove the pump and cables from the back panel so they can be installed on the new back panel at a later step.



Use a 3/8" socket to remove the drain plug from the original back panel and install it into the new back panel.



Use a 5/16" socket to secure the pump to the new back panel. Pass the pump and float switch cables through the hole in the housing.

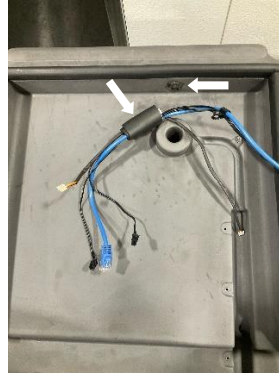


Attach the drain hose included with new back panel to the pump quick disconnect fitting.



Wrap Cat5 and sensor wires with the longer of the two foam gasket pieces provided with the kit at the same location on the cables that the original foam gasket piece was located.

Clean out the original cork tape insulation material from the smaller hole at the top of the back panel.



Pass the RH sensor cable through small hole at the top of the back panel and fill the hole in with cork tape material provided.

Push the foam gasket material wrapped around the cable bundle into the larger hole at the top of the back panel.

Position the cable bundle and plastic clips in the pre-molded cavities in the back panel.



Using a Philips head screwdriver, attach all plastic clips except for the bottom one to secure the cable bundle and foam material in place.

Position the new power cord with the bundle of cables at the bottom of the back panel. Wrap the smaller of the two foam gasket pieces provided around the bottom of the cable bundle.

Attach the last plastic clip to secure the wire bundle at the bottom of the back panel.



Lay the new back panel flat at the bottom of the unit. Attach the pump power, pump float switch, and sensor cable connectors to the mating connectors.

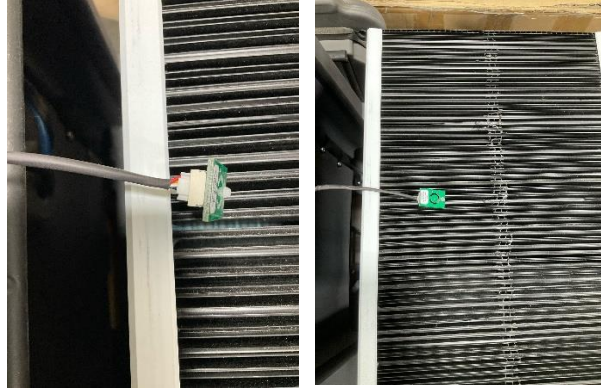
Ensure the sensor connector with silver marking connects to the mating connector with silver marking.

Push the Cat5 and new power cord cables through the hole in the base and bundle all cables with cable ties provided.



Rotate the back panel vertically and position it in place on the unit.

Reattach the RH sensor cable to the sensor PCBA and reattach the sensor PCBA to the heat exchanger block. Press the peg on the sensor PCBA into the original hole on the heat exchanger block that it was pulled out of.



Position the top housing piece over the heat exchanger block. Depending on the size of screws used, use a 3/8" or 10mm socket to tighten the two screws to secure the top housing piece.



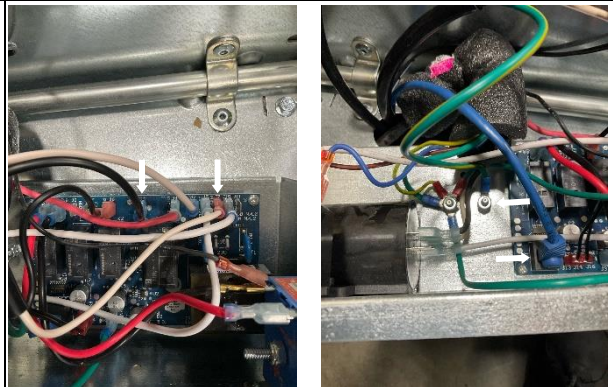
Depending on the size of screws used, use a 3/8" or 10mm socket to secure the back panel in place with six screws.



Rotate the unit forward to access the electrical box.

Attach the new power cord black wire lead terminal to PCBA J1 and white wire lead terminal to PCBA J2.

Attach the Cat5 cable to PCBA J12 and secure the power cord ground lead wire ring terminal to the ground stud using an 11/32" socket.



Place the clamp around the bundle of cables and foam piece and attach the clamp to the base piece using a Philips head screwdriver.



Position the electrical box in place and secure it to the base piece using a 5/16" socket to tighten the four screws.

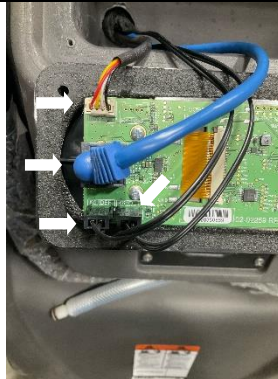


Depending on the size of screws used, use a 3/8" or 10mm socket to tighten the five screws securing the back panel to the base of the unit.



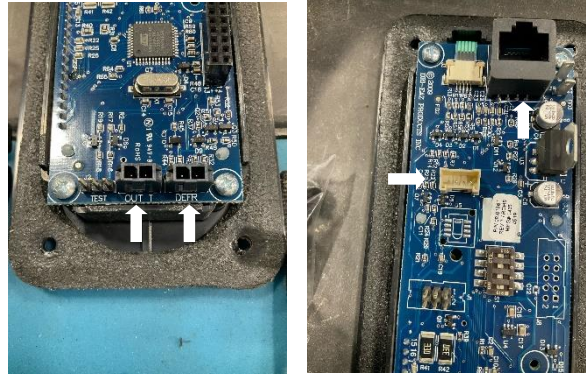
Rotate the unit to a vertical position and connect the cables to the back of the Command Hub.

Ensure that the sensor cable plug with silver marking is attached to the K5 DEF PCBA connector. Newer style sensors will have a label with "DEF" text rather than silver marking.



For the units with I-series control panels, connect the cables at the locations shown.

Ensure the sensor cable plug with silver marking is attached to the DEFR connector on the PCBA. Newer style sensors will have a label with “DEF” text rather than silver marking.



Tighten the four screws securing the Command Hub or I-series control panel using a Philips head screwdriver.

Remove the model / serial label from the original back panel and glue it in place in the cavity near the bottom of the new back panel.

Select one of the two warning labels provided that matches the warning label on original back panel. Apply the matching warning label to the back panel above the model / serial label.

Power up the unit and verify proper functionality.

