



**SANTA-FE™**  
INDOOR AIR QUALITY SOLUTIONS

# 2023 PRODUCT CATALOG



# PIONEERS OF INDOOR AIR QUALITY SOLUTIONS.

**AT SANTA FE, WE ARE FOCUSED ON THE FRONT LINE IN DEFENSE –  
THE BIG 3: DEHUMIDIFICATION, FILTRATION AND VENTILATION.**

## DEHUMIDIFICATION

When a home has too much moisture, it becomes a breeding ground for pests and a trigger for indoor pollutants such as dust, pollen, mold spores and bacteria. It can put the home's structural integrity, as well as the occupant's comfort, at risk.

Our innovative dehumidifiers properly maintain humidity levels — regardless of how hot it is outside and how much moisture is already in your home. At the same time, our superior filtration helps remove indoor pollutants.

UNMATCHED  
WARRANTY

## VENTILATION

Santa Fe's Ultra Series whole house ventilating dehumidifiers provide the additional benefit of outdoor mechanical supply ventilation that is filtered through a MERV-13 filter.

## INDUSTRY-LEADING WARRANTY.

To say we stand behind our products is an understatement. While most manufacturers offer only a 1-year warranty, every Santa Fe dehumidifier is backed with an industry-leading 6-year warranty.\*

## FILTERED TO THE HIGHEST STANDARDS OF FRESH.

Over a 6-year period, MERV-13 filters will remove two pounds of dust, pollen, mold spores, pet dander, and bacteria from the air in a home.\*\* In comparison, big-box units have MERV-4 or washable filters, which only remove 7 ounces of material from the air over the same period of time.

\* The UltraMD33 carries a 4-year warranty.

\*\* Based on regularly changing your air filter: see instructional manual for more information.



Small but tough, the **Compact Series** and **Advance Series** fit into tight spaces where other dehumidifiers simply can't. Extremely powerful and efficient, they tackle excess humidity to curb harmful mold growth in the harshest of conditions.

### ► COMPACT70



- + **MODEL:** 4033600
- + **OPERATING TEMPERATURE:** 49°F - 95°F
- + **FILTER:** MERV-13
- + **SIZING:**
  - **CRAWLSPACES:** UP TO 1,800 SQ. FT. - 2,600 SQ. FT.
  - **BASEMENTS:** UP TO 1,800 SQ. FT. - 2,200 SQ. FT.
- + **DIMENSIONS:** 12"W X 12"H X 21"D
- + **@80°F / 60%RH**  
PINT CAPACITY: 70 PINTS / 8.75 GALLONS PER DAY  
ENERGY FACTOR: 2.4 L/KWH
- + **@65°F / 60%RH**  
PINT CAPACITY: 40 PINTS / 5 GALLONS PER DAY  
ENERGY FACTOR: 2.0 L/KWH
- + **HVAC SYSTEM INTEGRATION:** NO
- + **VENTILATION:** NO
- + **CONTROL:** ON-BOARD DEHUMIDISTAT

Our most versatile and energy-efficient dehumidifier, the **Oasis105**, is perfect for a wide range of applications, including basements, attics, and crawl spaces. It features onboard digital controls, variable speed fan, dew point cut out, and a low maintenance positive pressure condensate drain.

### ► OASIS105



- + **MODEL:** 4041850
- + **OPERATING TEMPERATURE:** 49°F - 95°F
- + **FILTER:** MERV-13
- + **SIZING:**
  - **CRAWLSPACES:** UP TO 3,300 SQ. FT.
  - **BASEMENTS:** UP TO 2,600 SQ. FT.
- + **DIMENSIONS:** 16"W X 14.5"H X 24"D
- + **@80°F / 60%RH**  
PINT CAPACITY: 105 PINTS / 13.125 GALLONS PER DAY  
ENERGY FACTOR: 3.55 L/KWH
- + **@65°F / 60%RH**  
PINT CAPACITY: 67 PINTS / 8.375 GALLONS PER DAY  
ENERGY FACTOR: 2.85 L/KWH
- + **HVAC SYSTEM INTEGRATION:** NO
- + **VENTILATION:** NO
- + **CONTROL:** ON-BOARD DEHUMIDISTAT OR LOW-VOLTAGE CONTROLLER



Our **Impact Series** large-capacity dehumidifiers are tough, powerful and built to take on any job in any application.

### ► IMPACT155



- + **MODEL:** 4031470
- + **OPERATING TEMPERATURE:** 49°F - 95°F
- + **FILTER:** MERV-13
- + **SIZING:**
  - **CRAWLSPACES:** UP TO 3,600 SQ. FT. - 4,400 SQ. FT.
  - **BASEMENTS:** UP TO 3,800 SQ. FT. - 4,000 SQ. FT.
- + **DIMENSIONS:** 20.25"W X 21.75"H X 38"D
- + **@80°F / 60%RH**  
PINT CAPACITY: 155 PINTS / 19.375 GALLONS PER DAY  
ENERGY FACTOR: 3.4 L/KWH
- + **@65°F / 60%RH**  
PINT CAPACITY: 104 PINTS / 13 GALLONS PER DAY  
ENERGY FACTOR: 2.0 L/KWH
- + **HVAC SYSTEM INTEGRATION:** NO
- + **VENTILATION:** NO
- + **CONTROL:** ON-BOARD DEHUMIDISTAT

Powerful, efficient and boasting a streamlined look, our **Classic Series** is essential for any basement or finished space. Popular and proven, it receives some of our highest customer ratings.

### ► CLASSIC



- + **MODEL:** 4029700
- + **OPERATING TEMPERATURE:** 56°F - 95°F
- + **FILTER:** MERV-13
- + **SIZING:**
  - **BASEMENTS:** UP TO 2,500 SQ. FT. - 2,900 SQ. FT.
- + **DIMENSIONS:** 20"W X 36"H X 17"D
- + **@80°F / 60%RH**  
PINT CAPACITY: 110 PINTS / 13.75 GALLONS PER DAY  
ENERGY FACTOR: 3.0 L/KWH
- + **@65°F / 60%RH**  
PINT CAPACITY: 78 PINTS / 9.75 GALLONS PER DAY  
ENERGY FACTOR: 2.82 L/KWH
- + **HVAC SYSTEM INTEGRATION:** NO
- + **VENTILATION:** NO
- + **CONTROL:** ON-BOARD DEHUMIDISTAT



The **Ultra Series** offers the ultimate protection. Designed with dedicated ducting for whole house dehumidification and ventilation options.

### ► ULTRA70H



- + **MODEL:** 4033730
- + **OPERATING TEMPERATURE:** 49°F - 95°F
- + **FILTER:** MERV-13
- + **SIZING:** UP TO 1,800 SQ. FT. / 18,000 CU. FT.
- + **DIMENSIONS:** 12"W X 12"H X 28"D
- + **@80°F / 60%RH**  
PINT CAPACITY: 70 PINTS / 8.75 GALLONS PER DAY  
ENERGY FACTOR: 2.4 L/KWH
- + **@73°F / 60%RH**  
PINT CAPACITY: 55 PINTS / 6.875 GALLONS PER DAY  
ENERGY FACTOR: 2.27 L/KWH
- + **HVAC SYSTEM INTEGRATION:** YES
- + **VENTILATION:** OPTIONAL
- + **CONTROL:** ON-BOARD DEHUMIDISTAT OR LOW-VOLTAGE CONTROLLER

### ► ULTRA98



- + **MODEL:** 4034240
- + **OPERATING TEMPERATURE:** 49°F - 95°F
- + **FILTER:** MERV-13
- + **SIZING:** UP TO 2,300 SQ. FT. / 23,000 CU. FT.
- + **DIMENSIONS:** 14.5"W X 19.5"H X 32.38"D
- + **@80°F / 60%RH**  
PINT CAPACITY: 98 PINTS / 12.25 GALLONS PER DAY  
ENERGY FACTOR: 2.95 L/KWH
- + **@73°F / 60%RH**  
PINT CAPACITY: 72 PINTS / 9 GALLONS PER DAY  
ENERGY FACTOR: 2.31 L/KWH
- + **HVAC SYSTEM INTEGRATION:** YES
- + **VENTILATION:** OPTIONAL
- + **CONTROL:** LOW-VOLTAGE CONTROLLER REQUIRED

"V" for Vertical — the **Ultra120V** is the only vertical, ventilating dehumidifier on the market. This dehumidifier, which features superior filtration, is ideal for basements, mechanical rooms and large attics where floor space is limited.

### ► ULTRA120V



- + **MODEL:** 4036400
- + **OPERATING TEMPERATURE:** 49°F - 95°F
- + **FILTER:** MERV-13
- + **SIZING:** UP TO 3,000 SQ. FT. / 30,000 CU. FT.
- + **DIMENSIONS:** 26.75"W X 43.5"H X 18.75"D
- + **@80°F / 60%RH**  
PINT CAPACITY: 124 PINTS / 15.5 GALLONS PER DAY  
ENERGY FACTOR: 3.6 L/KWH
- + **@73°F / 60%RH**  
PINT CAPACITY: 93 PINTS / 11.625 GALLONS PER DAY  
ENERGY FACTOR: 2.88 L/KWH
- + **HVAC SYSTEM INTEGRATION:** YES
- + **VENTILATION:** OPTIONAL
- + **CONTROL:** LOW-VOLTAGE CONTROLLER REQUIRED



### ► ULTRA120



- + **MODEL:** 4031957
- + **OPERATING TEMPERATURE:** 49°F - 95°F
- + **FILTER:** MERV-13
- + **SIZING:** UP TO 3,000 SQ. FT. / 30,000 CU. FT.
- + **DIMENSIONS:** 14.4"W X 21"H X 32.2"D
- + **@80°F / 60%RH**  
PINT CAPACITY: 121 PINTS / 15.125 GALLONS PER DAY  
ENERGY FACTOR: 2.95 L/KWH
- + **@73°F / 60%RH**  
PINT CAPACITY: 79 PINTS / 9.875 GALLONS PER DAY  
ENERGY FACTOR: 1.93 L/KWH
- + **HVAC SYSTEM INTEGRATION:** YES
- + **VENTILATION:** OPTIONAL
- + **CONTROL:** LOW-VOLTAGE CONTROLLER REQUIRED

### ► ULTRA155



- + **MODEL:** 4031070
- + **OPERATING TEMPERATURE:** 49°F - 95°F
- + **FILTER:** MERV-13
- + **SIZING:** UP TO 3,500 SQ. FT. / 35,000 CU. FT.
- + **DIMENSIONS:** 20.25"W X 21.75"H X 41.5"D
- + **@80°F / 60%RH**  
PINT CAPACITY: 155 PINTS / 19.375 GALLONS PER DAY  
ENERGY FACTOR: 3.4 L/KWH
- + **@73°F / 60%RH**  
PINT CAPACITY: 104 PINTS / 13 GALLONS PER DAY  
ENERGY FACTOR: 2.6 L/KWH
- + **HVAC SYSTEM INTEGRATION:** YES
- + **VENTILATION:** OPTIONAL
- + **CONTROL:** LOW-VOLTAGE CONTROLLER REQUIRED

### ► ULTRA205



- + **MODEL:** 4031560
- + **OPERATING TEMPERATURE:** 49°F - 95°F
- + **FILTER:** MERV-13
- + **SIZING:** UP TO 5,000 SQ. FT. / 50,000 CU. FT.
- + **DIMENSIONS:** 20.25"W X 21.75"H X 41.5"D
- + **@80°F / 60%RH**  
PINT CAPACITY: 205 PINTS / 25.625 GALLONS PER DAY  
ENERGY FACTOR: 2.7 L/KWH
- + **@73°F / 60%RH**  
PINT CAPACITY: 171 PINTS / 21.375 GALLONS PER DAY  
ENERGY FACTOR: 2.46 L/KWH
- + **HVAC SYSTEM INTEGRATION:** YES
- + **VENTILATION:** OPTIONAL
- + **CONTROL:** LOW-VOLTAGE CONTROLLER REQUIRED



The **UltraMD33** is the first true in-wall dehumidifier. Featuring a tamper-proof cover, this unit runs independently of the HVAC system and creates a comfortable, healthier living environment for residents. Ideal for apartments, ductless mini-split applications, basements, and other space dehumidification needs. The MD33 can also be installed on a wall with the Surface Mount Kit and partially through a wall with the Bezel Kit.

## ► ULTRAMD33



- + **MODEL:** 4035900
- + **OPERATING TEMPERATURE:** 49°F - 95°F
- + **FILTER:** WASHABLE
- + **SIZING:** UP TO 1,200 SQ. FT. / 12,000 CU. FT.
- + **DIMENSIONS:** 14.19"W X 30"H X 5.75"D
- + **@80°F / 60%RH**  
PINT CAPACITY: 33 PINTS / 4.125 GALLONS PER DAY  
ENERGY FACTOR: 2.0 L/KWH
- + **@65°F / 60%RH**  
PINT CAPACITY: 17 PINTS / 2.125 GALLONS PER DAY  
ENERGY FACTOR: 1.3 L/KWH
- + **HVAC SYSTEM INTEGRATION:** NO
- + **VENTILATION:** NO
- + **CONTROL:** ON-BOARD DEHUMIDISTAT

## SURFACE MOUNT KIT

**PART NUMBER:** 4037766

The Ultra Series Surface Mount Kit can be used to permanently install the Ultra Series MD33 In-Wall Dehumidifier to masonry or CMU block when through-the-wall installation is not available.



## 2X4 WALL MOUNTING BEZEL KIT

**PART NUMBER:** 4037767

The Ultra Series 2X4 Wall Mounting Bezel Kit can be used to permanently install the Ultra Series MD33 In-Wall Dehumidifier in a 2X4 cavity without having to cut a hole in both sides of the drywall. The powder-coated metal bezel wraps around the front face of the dehumidifier giving it a completely polished look to blend into any environment.



# COMMITTED TO YOUR SUCCESS.

At Santa Fe, we are committed to partnering with you. After all, when you succeed, we succeed. And that's why we're with you every step of the way as you become a dealer of Santa Fe and our line of dehumidifiers.

## WHAT YOU CAN EXPECT FROM US

- + Comprehensive product training
- + Application and installation guidance
- + Field service and warranty repairs
- + Marketing and product literature
- + Customer service excellence



## The Santa Fe Difference:

- + **WARRANTY/QUALITY/LOW MAINTENANCE**  
Industry-Leading 6 Year Warranty
- + **AIR FILTRATION**  
Industry-Leading MERV 13 Filters

- + **ENERGY SAVINGS AND EFFICIENCY**  
Up to 36% More Efficient than Competitors
- + **SALES SUPPORT**  
Dedicated Support Nationwide
- + **HEADQUARTERED IN MADISON, WI**  
Engineered and Supported in the USA



FILTERS

COMPACT70 / ULTRA70



- MERV-13**
- + SIZE: 9" x 11" x 1"
  - + PART NUMBER: 4037724
  - + COMPATIBLE DEHUMIDIFIERS:
    - Compact70
    - Ultra70

OASIS105



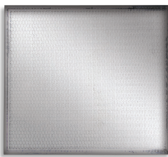
- MERV-13**
- + SIZE: 14" x 12" x 1"
  - + PART NUMBER: 4042005
  - + COMPATIBLE DEHUMIDIFIERS:
    - Oasis105

ULTRA98 AND 120



- MERV-13**
- + SIZE: 14" x 17.5" x 1"
  - + PART NUMBER: 4037722
  - + COMPATIBLE DEHUMIDIFIERS:
    - Ultra98
    - Ultra120

ULTRAMD33



- WASHABLE**
- + SIZE: 11" x 12.6" x 0.1"
  - + PART NUMBER: 4037714
  - + COMPATIBLE DEHUMIDIFIERS:
    - UltraMD33



- PRE-FILTER**
- + SIZE: 9" x 11" x .25"
  - + PART NUMBER: 4027168
  - + COMPATIBLE DEHUMIDIFIERS:
    - Compact70

IMPACT155 / CLASSIC



- MERV-13**
- + SIZE: 16" x 20" x 2"
  - + PART NUMBER: 4039391
  - + COMPATIBLE DEHUMIDIFIERS:
    - Impact155
    - Classic

ULTRA120V, 155 AND 205



- MERV-13**
- + SIZE: 16" x 20" x 2"
  - + PART NUMBER: 4039391
  - + COMPATIBLE DEHUMIDIFIERS:
    - Ultra120V
    - Ultra155
    - Ultra205

INSTALLATION ACCESSORIES

CONTROLS



- DEH 3000 / 3000R**
- + DEH 3000 PART NUMBER: 4028539
  - + DEH 3000R PART NUMBER: 4028407
  - + COMPATIBLE DEHUMIDIFIERS:
    - All Ultra Series except the UltraMD33

HANG KITS



- SMALL HANGING KIT**
- + PART NUMBER: 4036695
  - + COMPATIBLE DEHUMIDIFIERS:
    - Compact70
    - Ultra70
    - Ultra98
    - Ultra120

DEHUMIDIFIER RISERS

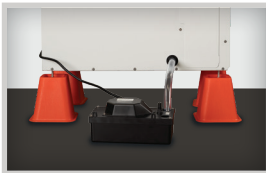


- DEHUMIDIFIER RISERS**
- + PART NUMBER: 4042109, 1-Pack
  - + PART NUMBER: 4041602, 10-Pack
  - + COMPATIBLE DEHUMIDIFIERS:
    - All except the Classic, Ultra 120V and UltraMD33



- LARGE HANGING KIT**
- + PART NUMBER: 4042835
  - + COMPATIBLE DEHUMIDIFIERS:
    - Oasis105
    - Impact155
    - Ultra155
    - Ultra205

CONDENSATE PUMPS

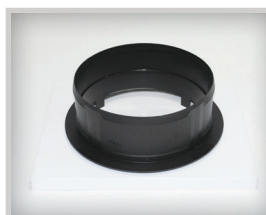


- + PART NUMBER: 4022220
- + COMPATIBLE DEHUMIDIFIERS:
  - All except the Ultra120V

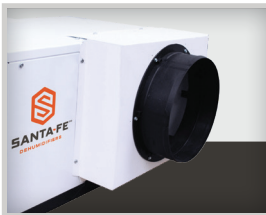
DUCT KITS



- COMPACT SERIES**
- + RETURN DUCT KIT PART NUMBER: 4030204
  - + SUPPLY DUCT KIT PART NUMBER: 4030203
  - + COMPATIBLE DEHUMIDIFIERS:
    - Compact70



- IMPACT SERIES**
- + RETURN DUCT KIT PART NUMBER: 4028610
  - + SUPPLY DUCT KIT PART NUMBER: 4028607
  - + COMPATIBLE DEHUMIDIFIERS:
    - Impact155



- OASIS SERIES**
- + SUPPLY DUCT KIT PART NUMBER: 4042275
  - + COMPATIBLE DEHUMIDIFIERS:
    - Oasis105



- CLASSIC SERIES**
- + PART NUMBER: 4021453
  - + COMPATIBLE DEHUMIDIFIERS:
    - Classic

Santa Fe dehumidifiers are equipped with the best filtration on the market. Our standard MERV-13 filters capture harmful contaminants in the air and keep the units running at peak efficiency.






# PRODUCT LINE UP

## SET IT + FORGET IT.


Santa Fe offers a full line of free-standing dehumidifiers. What does this mean? It means a quick solution to protect your investment. With no buckets to empty.

Applications include:

- + Basements
- + Crawl Spaces
- + Garages
- + Theater/Multi-Use areas
- + Workshops
- + Gun Rooms
- + Exercise rooms




ULTRAMD33	
	
@ 80°F / 60%RH WATER REMOVAL	33 PINTS/DAY 4.125 GALLONS/DAY
EFFICIENCY	4.25 PINTS/KWH
ENERGY FACTOR	2.0 L/KWH
@ 65°F / 60%RH WATER REMOVAL	17 PINTS/DAY 2.125 GALLONS/DAY
EFFICIENCY	2.7 PINTS/KWH
ENERGY FACTOR	1.3 L/KWH
CURRENT DRAW	2.8 AMPS
AIR FILTER	WASHABLE
DIMENSIONS	14.2" W 30" H 5.75" D
WEIGHT	39 LBS.
SIZED FOR IN-WALL APPLICATIONS	UP TO 1,200 FT <sup>2</sup>
WARRANTY	4 YEARS




*The UltraMD33 In-Wall Dehumidifier is ideal for multi-family applications, basements, hotels and other spaces needing dehumidification.*

	COMPACT70	OASIS105	CLASSIC	IMPACT155
				
@ 80°F / 60%RH WATER REMOVAL	70 PINTS/DAY 8.75 GALLONS/DAY	105 PINTS/DAY 13.125 GALLONS/DAY	110 PINTS/DAY 13.75 GALLONS/DAY	155 PINTS/DAY 19.375 GALLONS/DAY
EFFICIENCY	5.0 PINTS/KWH	7.6 PINTS/KWH	6.3 PINTS/KWH	7.3 PINTS/KWH
ENERGY FACTOR	2.4 L/KWH	3.55 L/KWH	3.0 L/KWH	3.4 L/KWH
@ 65°F / 60%RH WATER REMOVAL	40 PINTS/DAY 5 GALLONS/DAY	67 PINTS/DAY 8.375 GALLONS/DAY	78 PINTS/DAY 9.75 GALLONS/DAY	104 PINTS/DAY 13 GALLONS/DAY
EFFICIENCY	4.2 PINTS/KWH	6.0 PINTS/KWH	5.96 PINTS/KWH	4.2 PINTS/KWH
ENERGY FACTOR	2.0 L/KWH	2.85 L/KWH	2.82 L/KWH	2.0 L/KWH
CURRENT DRAW	5.1 AMPS	5.0 AMPS	6.4 AMPS	8.0 AMPS
AIR FILTER	MERV-13	MERV-13	MERV-13	MERV-13
DIMENSIONS	12" W 12" H 21" D	24" W 14.5" H 16" D	20" W 36" H 17" D	20.25" W 21.75" H 38" D
WEIGHT	55 LBS.	59 LBS.	110 LBS.	140 LBS.
SIZED FOR CRAWL SPACES	UP TO 2,600 FT <sup>2</sup> TIGHTLY SEALED UP TO 2,200 FT <sup>2</sup> MODERATELY SEALED UP TO 1,800 FT <sup>2</sup> LOOSELY SEALED	UP TO 3,300 FT <sup>2</sup> TIGHTLY SEALED UP TO 2,900 FT <sup>2</sup> MODERATELY SEALED UP TO 2,500 FT <sup>2</sup> LOOSELY SEALED	NOT APPLICABLE TO CRAWL SPACES	UP TO 4,400 FT <sup>2</sup> TIGHTLY SEALED UP TO 4,000 FT <sup>2</sup> MODERATELY SEALED UP TO 3,600 FT <sup>2</sup> LOOSELY SEALED
SIZED FOR BASEMENTS	UP TO 2,200 FT <sup>2</sup> TIGHTLY SEALED UP TO 2,000 FT <sup>2</sup> MODERATELY SEALED UP TO 1,800 FT <sup>2</sup> LOOSELY SEALED	UP TO 2,600 FT <sup>2</sup> TIGHTLY SEALED UP TO 2,400 FT <sup>2</sup> MODERATELY SEALED UP TO 2,200 FT <sup>2</sup> LOOSELY SEALED	UP TO 2,900 FT <sup>2</sup> TIGHTLY SEALED UP TO 2,700 FT <sup>2</sup> MODERATELY SEALED UP TO 2,500 FT <sup>2</sup> LOOSELY SEALED	UP TO 4,000 FT <sup>2</sup> TIGHTLY SEALED UP TO 3,800 FT <sup>2</sup> MODERATELY SEALED UP TO 3,600 FT <sup>2</sup> LOOSELY SEALED
WARRANTY	6 YEARS	6 YEARS	6 YEARS	6 YEARS



# PRODUCT LINE UP

	ULTRA70	ULTRA98	ULTRA120
			
<b>@ 80°F / 60%RH</b>			
WATER REMOVAL	70 PINTS/DAY 8.75 GALLONS/DAY	98 PINTS/DAY 12.25 GALLONS/DAY	121 PINTS/DAY 15.125 GALLONS/DAY
EFFICIENCY	5.0 PINTS/KWH	6.1 PINTS/KWH	6.1 PINTS/KWH
ENERGY FACTOR	2.4 L/KWH	2.95 L/KWH	2.95 L/KWH
<b>@ 73°F / 60%RH</b>			
WATER REMOVAL	55 PINTS/DAY 6.875 GALLONS/DAY	72 PINTS/DAY 9 GALLONS/DAY	79 PINTS/DAY 9.875 GALLONS/DAY
EFFICIENCY	4.79 PINTS/KWH	4.88 PINTS/KWH	4.07 PINTS/KWH
ENERGY FACTOR	2.27 L/KWH	2.31 L/KWH	1.93 L/KWH
CURRENT DRAW	5.1 AMPS	5.9 AMPS	7.3 AMPS
BLOWER	150 CFM @ 0.0" WG 140 CFM @ 0.2" WG 130 CFM @ 0.4" WG	320 CFM @ 0.0" WG 297 CFM @ 0.2" WG 215 CFM @ 0.4" WG	350 CFM @ 0.0" WG 285 CFM @ 0.2" WG 210 CFM @ 0.4" WG
AIR FILTER	MERV-13	MERV-13	MERV-13
DIMENSIONS	12" W 12" H 28" D	14.5" W 19.5" H 32.4" D	14.4" W 21" H 32.2" D
WEIGHT	55 LBS.	81 LBS.	91 LBS.
SIZING	UP TO 1,800 FT. <sup>2</sup>	UP TO 2,300 FT. <sup>2</sup>	UP TO 3,000 FT. <sup>2</sup>
WARRANTY	6 YEARS	6 YEARS	6 YEARS

	ULTRA120V	ULTRA155	ULTRA205
			
WATER REMOVAL	124 PINTS/DAY 15.5 GALLONS/DAY	155 PINTS/DAY 19.375 GALLONS/DAY	205 PINTS/DAY 25.625 GALLONS/DAY
EFFICIENCY	7.6 PINTS/KWH	7.3 PINTS/KWH	5.7 PINTS/KWH
ENERGY FACTOR	3.6 L/KWH	3.4 L/KWH	2.7 L/KWH
WATER REMOVAL	93 PINTS/DAY 11.625 GALLONS/DAY	104 PINTS/DAY 13 GALLONS/DAY	171 PINTS/DAY 21.375 GALLONS/DAY
EFFICIENCY	6.08 PINTS/KWH	5.5 PINTS/KWH	5.19 PINTS/KWH
ENERGY FACTOR	2.88 L/KWH	2.6 L/KWH	2.46 L/KWH
CURRENT DRAW	5.8 AMPS	8.0 AMPS	13.2 AMPS
BLOWER	445 CFM @ 0.0" WG 390 CFM @ 0.2" WG 360 CFM @ 0.4" WG	391 CFM @ 0.0" WG 363 CFM @ 0.2" WG 337 CFM @ 0.4" WG	526 CFM @ 0.0" WG 495 CFM @ 0.2" WG 458 CFM @ 0.4" WG
AIR FILTER	MERV-13	MERV-13	MERV-13
DIMENSIONS	26.75" W 43.5" H 18.75" D	20.25" W 21.75" H 41.5" D	20.25" W 21.75" H 41.5" D
WEIGHT	120 LBS.	140 LBS.	140 LBS.
SIZING	UP TO 3,000 FT. <sup>2</sup>	UP TO 3,500 FT. <sup>2</sup>	UP TO 5,000 FT. <sup>2</sup>
WARRANTY	6 YEARS	6 YEARS	6 YEARS

**DUCT + VENTILATE.**

The Ultra Series, formerly the Ultra Aire brand, focuses on providing dehumidification to the whole house or project. In addition, it provides the option to ventilate a home, with the purpose of maintaining a healthy and safe living environment.





**SANTA-FE™**  
INDOOR AIR QUALITY SOLUTIONS



**Contact us:**

Santa-Fe-Products.com or 800-533-7533

©2023 Therma-Stor LLC  
TS-1203 09/23 Rev F