

PURCHASER	P.O. #	DATE
PROJECT	LOCATION	
ENGINEER	ARCHITECT	
SUBMITTED BY	FOR APPROVAL	FOR REFERENCE

ITEM	PLAN DESIGNATION	QUANTITY	COOLING BTU/H	VOLTAGE	FRIEDRICH MODEL

Features

- Inverter technology (variable speed compressor)
- High efficiency for low operating cost
- DiamonGold Advanced Corrosion Protection™
- Auto dry indoor coil
- Cooling/Heating/Fan mode
- Surge Cool/Heat
- Natural air flow
- 4-Way auto swing
- Ultra quiet operation
- Sleep mode
- Dry Mode
- Auto restart
- Auto changeover
- Built-in low ambient standard, down to 14°F (Cooling Mode)
- 24-hour on/off timer
- Multiple ease of installation features
- BLDC Motor



MW18Y3J, MW24Y3J, MW36Y3J



WIRELESS
REMOTE CONTROL

All Inverter line



MR18Y3J



MR24Y3J, MR36Y3J

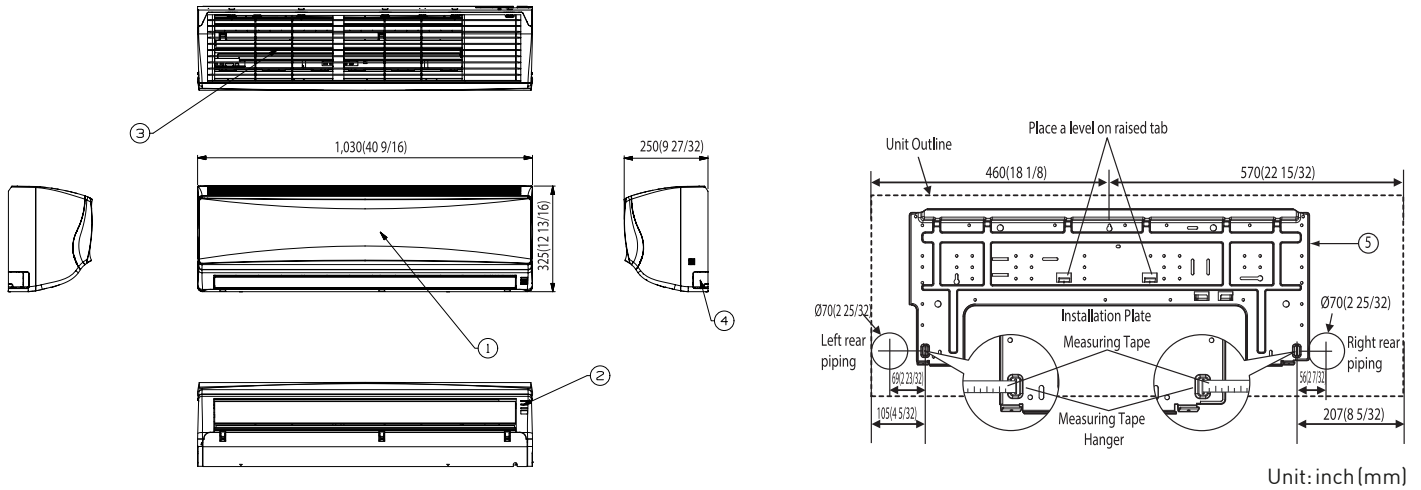
SPECIFICATIONS

PERFORMANCE RATINGS		Single Zone Wall-Mounted - Heat Pumps		
		18k	24k	36k
SYSTEM MODEL NO.		M18YJ	M24YJ	M36YJ
INDOOR MODEL		MW18Y3J	MW24Y3J	MW36Y3J
OUTDOOR MODEL		MR18Y3J	MR24Y3J	MR36Y3J
SPECIFICATIONS				
CAPACITY COOLING (RATED)	Btu	17,000	22,000	33,000
CAPACITY COOLING (MIN-MAX)	Btu	3,070~20,470	3,070~30,030	3,070~34,000
CAPACITY HEATING @47° F (RATED)	Btu	20,200	27,000	35,200
CAPACITY HEATING @17° F (RATED)	Btu	13,200	17,900	23,200
CAPACITY HEATING (MIN-MAX)	Btu	3,070~30,700	3,070~38,898	3,070~38,900
COOLING AMPS		7	7.9	17.0
HEATING AMPS		7.3	10.7	16.2
SENSIBLE HEAT RATIO		.73	.72	.78
SEER		18.0	21.5	17.5
EER		12.0	12.5	8.15
HSPF		9.7	11.0	10.0
ENERGY STAR		YES	YES	No
MOISTURE REMOVAL	Pts/h	4.2	5.5	6.5
AIRFLOW (QUIET, LOW, MED, HIGH)	CFM	300/371/441/512	300/389/512/600	459/530/706/848
SOUND RATING - INDOOR	dB-A	29 / 35 / 40 / 45	33 / 39 / 43 / 46	37 / 40 / 44 / 49
SOUND RATING - OUTDOOR	dB-A	53	54	55
OPERATING RANGE COOLING (WIND BAFFLE)	°F	14(0)~118	14(0)~118	14(0)~118
OPERATING RANGE HEATING	°F	-4~75	-4~75	-4~75
EST. YEARLY OPERATING COST	\$	127	158	395
ELECTRICAL DATA				
POWER SOURCE	V	230/208/60/1	208/230/60/1	230/208/60/1
MINIMUM AMPACITY	A	19	19	19
COOLING WATTS	W	1416	1760	4024
HEATING WATTS	W	1680	2380	3840
MAX. TD FUSE/BREAKER	A	20	35	35
POWER AND COMMUNICATION CABLE	No. x AWG	4 x 14	4 x 14	4 x 14
REFRIGERATION SYSTEM				
REFRIGERANT		R410A	R410A	R410A
COMPRESSOR TYPE		Twin Rotary	Twin Rotary	Twin Rotary
CONNECTIONS		Flare	Flare	Flare
LIQUID LINE O.D.	in	1/4	3/8	3/8
SUCTION LINE O.D.	in	1/2	5/8	5/8
FACTORY PRECHARGE	ft	25	25	25
REFRIGERANT CHARGE	oz	48	78	78
MIN./MAX. LINE LENGTH	ft	10~66	10~164	10~164
MAX. HEIGHT DIFFERENCE	ft	33	98	98
DIMENSIONS & WEIGHT				
INDOOR UNIT				
W X H X D	in	40-5/8 x 12-7/8 x 9-5/8	46-7/8 x 13-5/8 x 10-3/8	46-7/8 x 13-5/8 x 10-3/8
NET WEIGHT	lbs	31	40	40
SHIPPING WEIGHT	lbs	40	46	46
OUTDOOR UNIT				
W X H X D	in	34-5/16 x 25-7/8 x 12-5/8	34-5/16 x 31-1/2 x 12-5/8	34-5/16 x 31-1/2 x 12-5/8
NET WEIGHT	lbs	97	125	125
SHIPPING WEIGHT	lbs	101	132	132
TOTAL NET WEIGHT	lbs	128	165	165
TOTAL SHIPPING WEIGHT	lbs	141	178	178

Your operating costs will depend on your utility rates and use. The estimated operating cost is based on a electricity cost of \$.115 per kWh. For more information, visit www.ftc.gov/energy. Due to continuing research in new energy-saving technology, specifications are subject to change without notice.



DIMENSIONAL DRAWINGS INDOOR UNIT / MW18Y3J



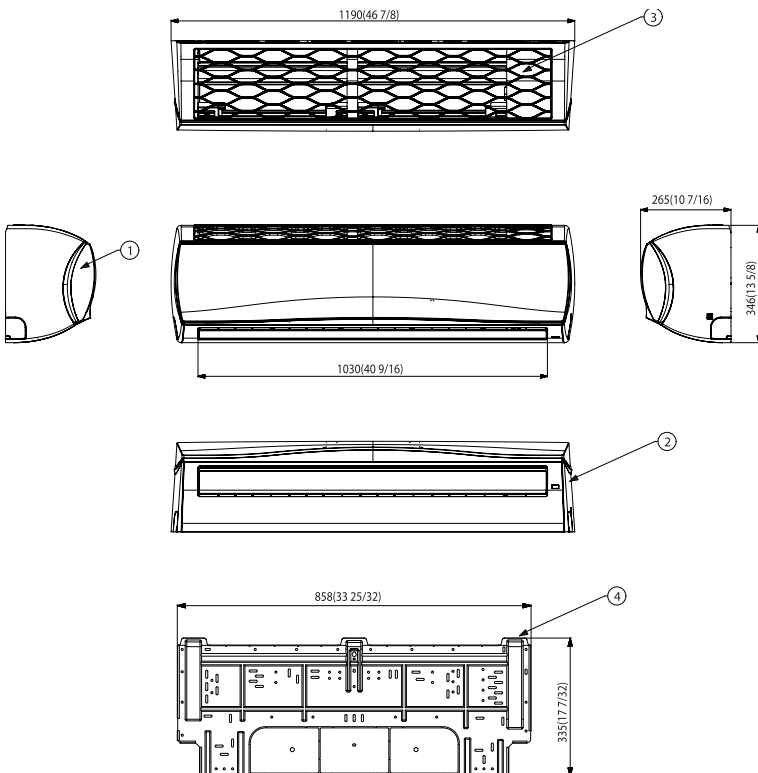
Unit: inch (mm)

Item No.	Part Name	Remark
1	Front Panel	
2	Display & Signal Receiver	
3	Air Suction Grille	
4	Knockout Hole	For pipe and cable
5	Installation Plate	

Note

1. The unit should be installed according to installation manual which is in the product box.
2. The unit is powered from the outdoor unit. So the power cable should be connected with the outdoor unit.

INDOOR UNITS / MW24Y3J, MW36Y3J



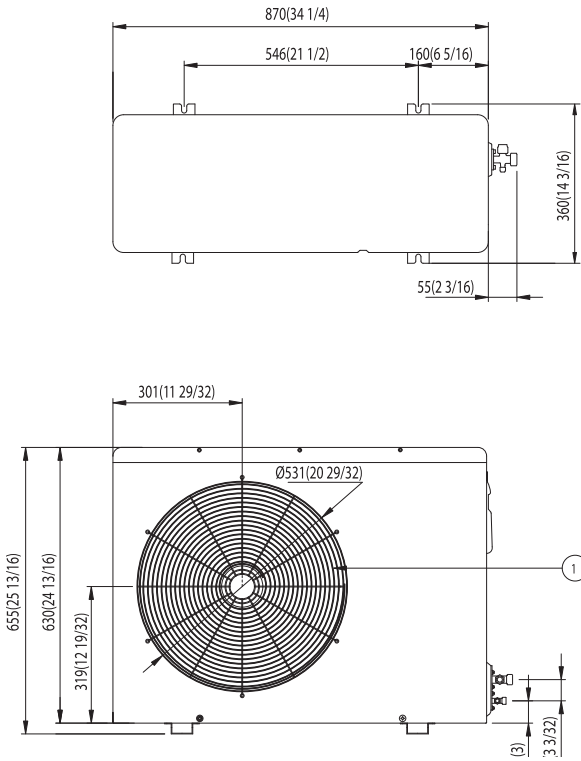
Item No.	Part Name	Remark
1	Front Panel	
2	Display & Signal Receiver	
3	Air Suction Grille	
4	Installation Plate	

Note

1. The unit should be installed according to installation manual which is in the product box.
2. The unit is powered from the outdoor unit. So the power cable should be connected with the outdoor unit.

DIMENSIONAL DRAWINGS

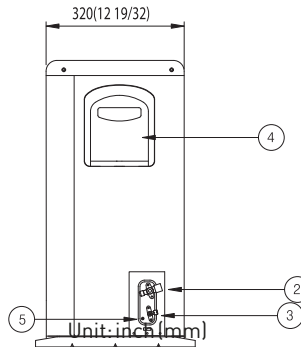
OUTDOOR UNITS / MR18Y3J



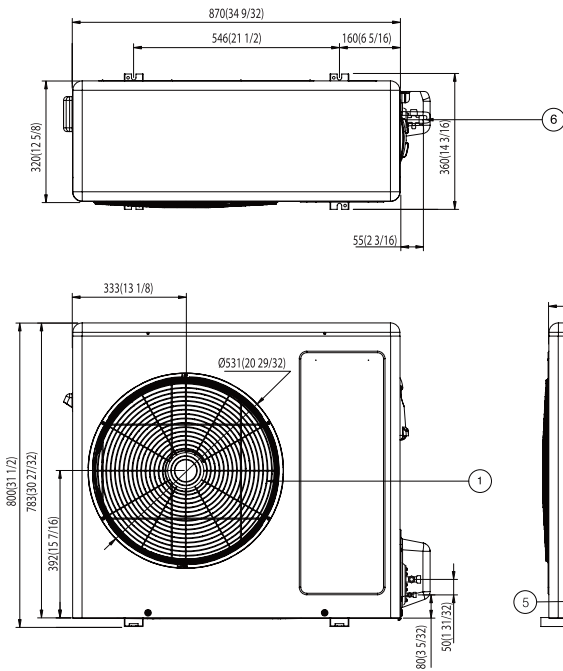
Item No.	Part Name	Remark
1	Air Discharge Grille	
2	Gas Pipe Connection Port	
3	Liquid Pipe Connection Port	
4	Control Box	
5	Earth Screw	

Note

1. The unit is not allowed to be installed in a closed area.
2. In an area or a space having no proper air circulation, an air guide should be installed in the outdoor unit.



OUTDOOR UNITS / MR24Y3J, MR36Y3J



Item No.	Part Name	Remark
1	Air discharge grille	
2	Gas pipe connection	
3	Liquid pipe connection	
4	Power & Transmission connection	
5	Earth screw	
6	SVC valve cover	

Note

1. The unit is not allowed to be installed in a closed area.
2. In an area or a space having no proper air circulation, an air guide should be installed in the outdoor unit.

ACCESSORIES

REFRIGERATION LINE SETS* (Required accessory)

Kit#	Length Ft.	Liquid	Suction
T32150	15'	1/4"	3/8"
T32350	35'	1/4"	3/8"
T42150	15'	1/4"	1/2"
T42350	35'	1/4"	1/2"
T53150	15'	3/8"	5/8"
T53350	35'	3/8"	5/8"

*Insulated line sets are available for all Friedrich split systems in 15 ft. and 35 ft. lengths. Each line set is equipped with flare nuts on both ends. Both liquid and suction lines are insulated. Line sets can be joined together with field supplied double male connectors. Each system requires one line set for each indoor unit installed.

LOW AMBIENT WIND BAFFLE KIT

WIND BAFFLE	USED WITH
DLAWB2	18000 - 36000 Btu wall-mounted single zone models



THERMOSTAT



Optional wired wall-mounted controller

DDC1 DRY CONTACT ACCESSORY FOR J-SERIES

- Allows 3rd party thermostats
- Allows door switch or occupancy sensors



Adapter for 5/16" service valves

- Adapter is available through Friedrich parts distributors.
- All R410A models have 1/2"-20 UNF (5/16" SAE) X 1/4" SAE thread per inch charging and vacuuming ports.
- An adapter must be used for 1/4" gauges.