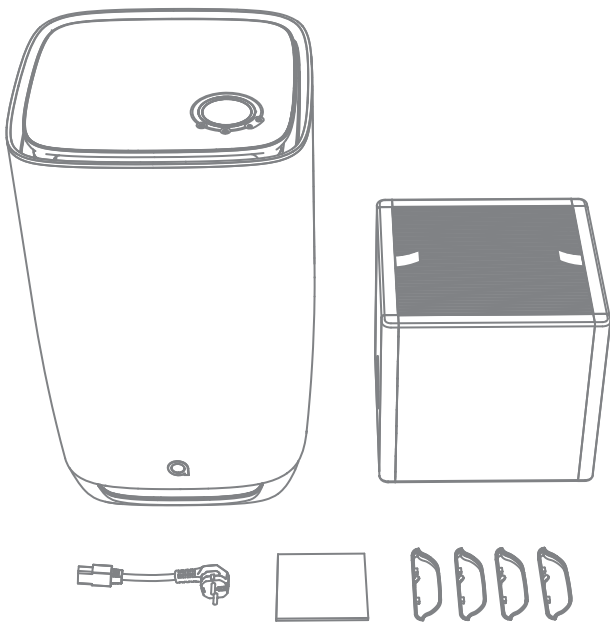




aeris

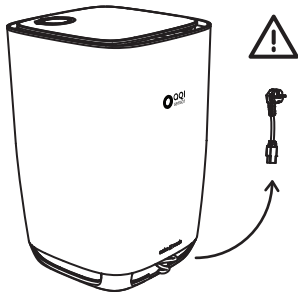
Quick Set Up Guide



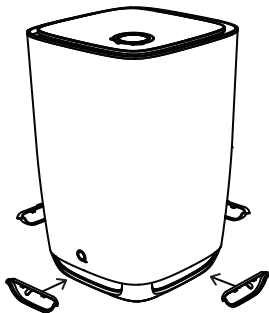
air / pre-installed filter
cable / user manuals / 4 prefilters



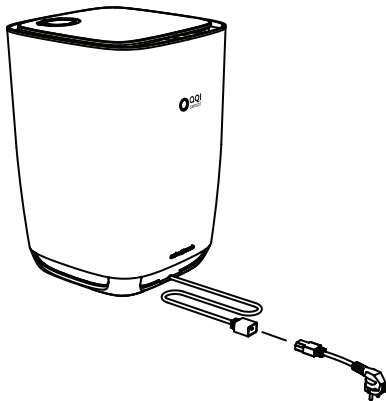
Gently pull the power cable out of the air inlet and connect the short extension cable with the local power plug.

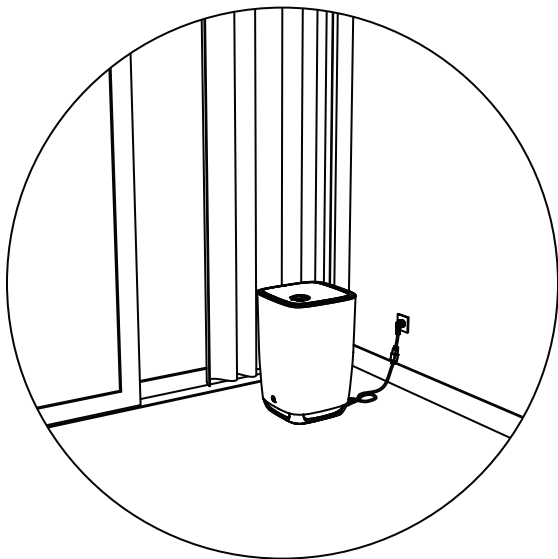


CAUTION: The power cable extension with the local power plug might be hidden deep in the air inlet



Place the washable prefilters into the four air inlets of your aair.





Recommendations

Place the device at least 1m from walls and next to a potential leaking point (Windows).

Refrain from covering the air inlet or air outlet of the device.