



SUBMITTAL EH035CAV / UH035CAV
Slim Duct, single zone split system

Job Name	Location		
Purchaser	Engineer		
Submitted to	Reference	Approval	Construction
Unit Designation	Schedule #		

Specifications

Performance	Nominal Capacity	Cooling/Heating (Btu/h)	12,000 / 13,600
	Capacity Range	Cooling (Btu/h)	3,300 - 14,300
		Heating (Btu/h)	3,100 - 18,000
	SEER / EER		17.8 / 10.4
	HSPF		9.2
	Condensate (pints/hour)		3.38
Power	Voltage (øV/Hz)		1 / 208-230 / 60
	Rated Current (Low/Std./Max.)	Cooling (A)	1.6 / 5.5 / 7.0
		Heating (A)	1.4 / 5.4 / 7.4
	Max. Breaker		15 A
Min. Circuit Ampacity		10 A	
Dimensions	W X H X D (inches)	Indoor Unit	35 7/16 X 7 7/8 X 23 5/8
		Outdoor Unit	31 1/8 X 21 7/8 X 11 1/4
	Weight (lbs.)	Indoor Unit	57
		Outdoor Unit	78
	Supply duct connection (inches)		6 X 33 7/8
	Return duct connection (inside, inches)		6 5/8 X 30 1/2
Condensate Connection		OD 1 1/4", ID 1"	
Heat Exchanger	Indoor & Outdoor Unit	Type	Aluminum Fin - Copper Tube
		FPI	18
		Pipe Diameter	1/4 inch
Sound Pressure Level	Indoor Unit (high)		32
	Outdoor Unit (high)		47
Operating Temperatures	Cooling	°F	14 ≤ T ≤ 115
	Heating	°F	-4 ≤ T ≤ 75
Pipe Connections	Indoor & Outdoor	High side (flare)	1/4"
		Low side (flare)	3/8"
	Maximum Line Set Length		65 ft.
	Maximum Vertical Separation		23 ft.
Oil Trap			26' of vertical separation
Refrigerant	Type		R410A
	Control Method		Electronic Expansion Valve
	Factory Charge (oz)		35.27
	Charged for		50 ft.
Additional Refrigerant			0.15 oz/ft over 50'
Compressor	Manufacturer		Samsung
	Type		DC, Inverter Driven, Twin Rotary
	RLA (A)		7.0
Evaporator Fan	Type		Sirocco (2)
	Air Volume L/M/H (CFM)	Cooling	247 / 300 / 353
		Heating	265 / 318 / 388
External Static Pressure	Standard/max. ("WC)		0.08 / 0.125
Condenser Fan	Motor		BLDC With Axial Type Fan (1)
	Output	W	31
	FLA	Amps	0.1
Accessories	Samsung condensate pump		MDP-E075SEE
	Wireless Remote Control	Wireless remote	MR-AH01U
		Wire from receiver to unit	MRW-10AU
		Wireless signal receiver	MRK-A00U
Line sets - insulated and flared, interconnect cables included			25' - ILS2506 50' - ILS5006
Safety Certifications			ETL & ETLc
Warranty	5 Years compressor, 3 Year Parts, 120 Day limited labor		



EH035CAV



UH035CAV

- Low ambient control built in
- Outdoor unit shall provide 208/230V power to indoor unit via 14AWG X 3 interconnect power cable
- Wired controller ships as standard

Construction

Indoor unit chassis shall be constructed from galvanized steel

The outdoor unit shall be galvanized steel with a baked on powder coated finish for durability

Heat Exchanger

The heat exchanger shall be mechanically bonded fin to copper tube

Refrigerant System

The compressor shall be hermetically sealed, inverter controlled, Twin BLDC Rotary

Refrigerant flow shall be controlled by EEV (electronic expansion valve) at outdoor unit

Indoor Fan

Indoor fans are twin backward curved centrifugal Sirocco type with a single BLDC motor

Three fan speed settings and auto setting

Controls

Control signal shall be DDC type signal

Interconnect control wiring shall be 16AWG X 2 shielded wire between outdoor and indoor units

Unit shall be operated via wired or wireless controller

Nominal cooling capacities are based on: Indoor temperature: 80°F DB, 67°F WB. Outdoor temperature: 95°F DB, 75°F WB.
Nominal heating capacities are based on: Indoor temperature: 70°F DB, 60°F WB. Outdoor temperature: 47°F DB, 43°F WB.

Quietside maintains a policy of ongoing development, specifications are subject to change without notice. Refer to www.AHRIdirectory.org for current reference numbers.

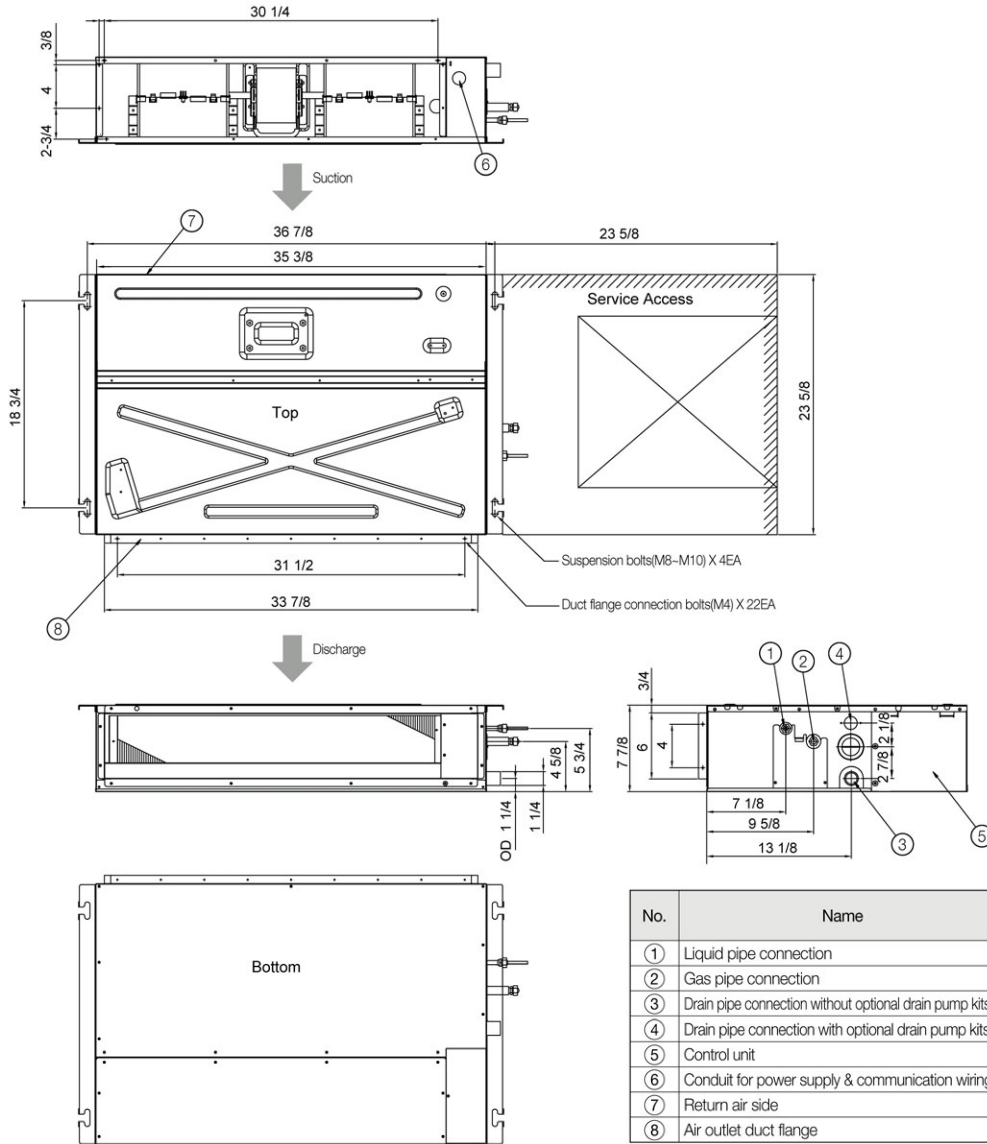




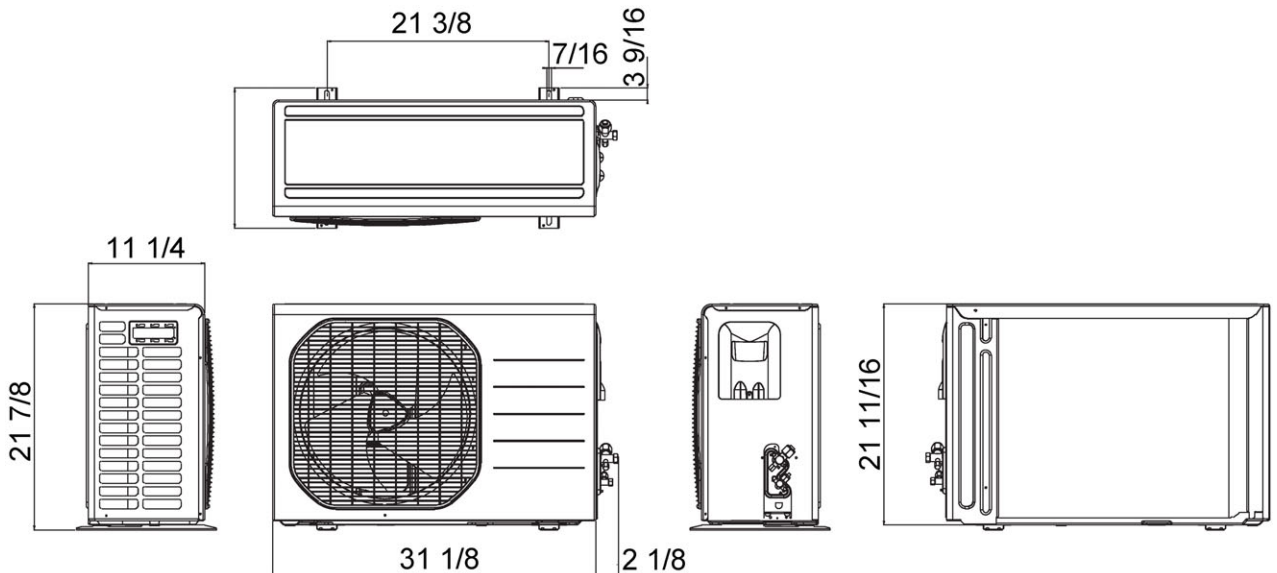
SUBMITTAL EH035CAV / UH035CAV
Slim Duct, single zone split system

EH035CAV

Unit: Inches



UH035CAV



Quietside maintains a policy of ongoing development, specifications are subject to change without notice.

888-699-6067

www.Quietside.com

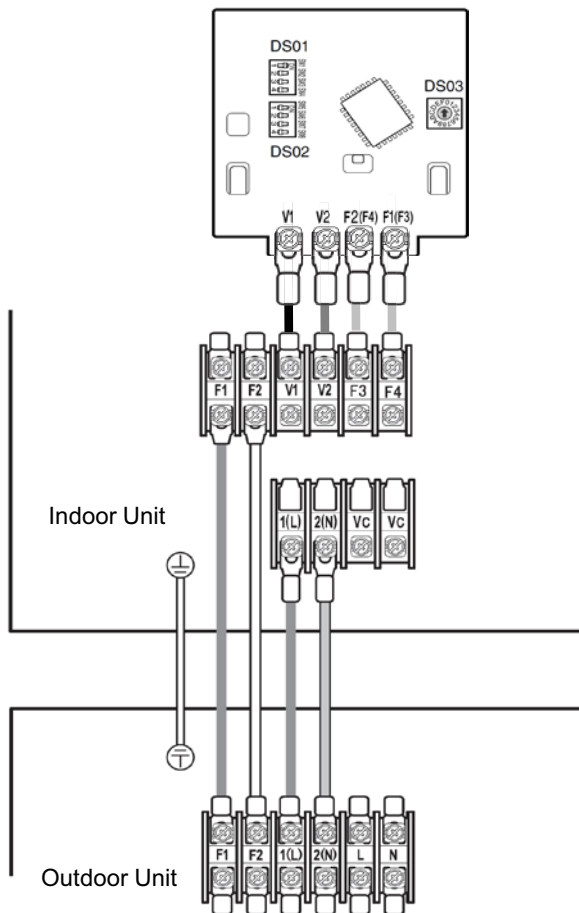


Easy air handler control

- Air handler operation ON/OFF
- Air handler operation mode, set temperature, air flow direction, fan speed
- Error display
- Filter replacement alarm display and reset
- Single indoor unit control or multiple unit control (maximum 16 units)
- Restriction on wireless control usage
- Heat mode skip option
- Indoor unit operation state display

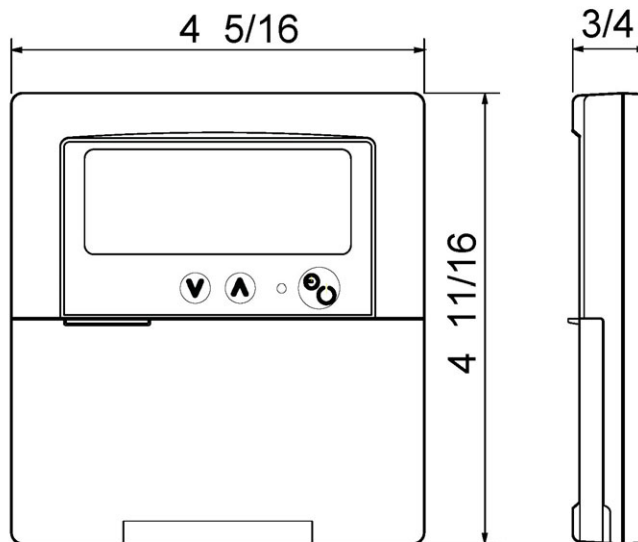


MWR-TH01



- DC 12V (V1/V2) power supplied by indoor unit
- RS485 communication (F3/F4)
- 16AWG shielded cable is necessary for proper operation

Unit: inches



Quietside maintains a policy of ongoing development, specifications are subject to change without notice.