

## Split System Submittal Data

System: **42PET1U6** Indoor: **S-42PT1U6** Outdoor: **U-42PE1U6**  
 Single Split System - Ceiling-Suspended Heat Pumps

Job Name: \_\_\_\_\_  
 Location: \_\_\_\_\_  
 Engineer: \_\_\_\_\_  
 Submitted to: \_\_\_\_\_  
 Submitted by: \_\_\_\_\_  
 Reference: \_\_\_\_\_

Approval: \_\_\_\_\_  
 Date: \_\_\_\_\_  
 Construction: \_\_\_\_\_  
 Unit#: \_\_\_\_\_  
 Drawing#: \_\_\_\_\_



General Data	
<b>Power (V/P/Hz)</b>	<b>230/208/1/60</b>
Circuit Ampacity (A)	15-40 Indoor-Outdoor
Fuse Size, Max.(A)	15-40 Indoor-Outdoor
<b>Compressor</b>	<b>DC Rotary Inverter</b>
No. Used	1
R.L. Amps - L.R. (A)	18.1 - 31.0
Outdoor Unit	
Fan type	Propeller
Dia & Length (in.) - No. used	18-7/64-2
Type Drive - No. Speeds	DC Motor
No. Poles (RPM)	8 - 830
No. Motors (W)	2 - 90
CFM (High)	3531
F.L. Amps (A)	19.7
<b>Coil Type</b>	<b>Aluminum Fin &amp; Copper Pipe</b>
Fin Type - Pipe Type	Slit Plate - Inner Rifled
Rows - F.P.I.	2 - 12.7
Face Area (sq.ft.)	11.62
Tube Size (in)	3/8"
Indoor Unit	
Fan type	Centrifugal
Dia & Length (in.) - No. used	5-29/32-4
No. Speeds	3 & Auto
No. Poles (RPM, High)	4 - 1099
No. Motors (W)	1 - 100
CFM (Hi/Med/Lo)	1130/950/775
Indoor Sound Rating (Hi) (dB-A)	44
F.L. Amps (A)	0.8
<b>Coil Type</b>	<b>Aluminum Plate Fin &amp; Copper Tube</b>
Fin Type - Pipe Type	Slit Plate - Inner Rifled
Rows - F.P.I.	3 - 14.9
Face Area (sq.ft.)	3.51
Tube Size (in)	9/32"
Drain Connection Size (in.)	1-1/4"

<b>Refrigerant</b>	<b>R410A</b>
Lbs. - R410a	7.94
Control	Electric Expansion Valve
Connection	Flare
Line Length, Max (ft.)	165
Line Difference, Max (ft.)	50 (outdoor lower), 100 (outdoor higher)
Line Size (in. O.D. Discharge)	3/8"
Line Size (in. O.D. Suction)	5/8"
Dimensions (HxWxD)	
Indoor Unit (Crated) (in.)	12-15/32 x 66-1/16 x 31-1/16
Indoor Unit (Uncrated) (in.)	9-7/16 x 62-1/32 x 26-3/8
Outdoor Unit (Crated) (in.)	52-3/8 x 39-31/32 x 6-3/32
Outdoor Unit (Uncrated) (in.)	48-7/16 x 37 x 13-3/8
Weight (lbs.)	
(Indoor) Net	84
(Indoor) Shipping	97
(Outdoor) Net	220
(Outdoor) Shipping	240
(Indoor) Shipping Volume (cu.ft.)	14.8
(Outdoor) Shipping Volume (cu.ft.)	19.5

**Performance Data @ ARI Standard Conditions (230/208V)**

<b>Cooling</b>	
Total Capacity (BTU/H)	39,000 (9,500 - 39,000)
Sensible Capacity (BTU/H)	23,560
Latent Capacity (BTU/H)	15,440
SEER	15.6
Dehumidification (Pints/H)	12.6
Amps (A)	21.1/23.3
Power Inputs (W)	4,140/4,140
Outdoor Sound Rating (dB-A) High	53
<b>Heating</b>	
Total Capacity (BTU/H)	44,500 (8,000 - 44,500)
HSPF	10.2
Amps (A)	18.6/20.6
Max Amps (A)	18.6/20.6
Power Inputs (W)	3,630/3,630
Back-up Strip Heater (KW)	N/A
Outdoor Sound Rating (dB-A) High	53

**Features**

Controls	Microprocessor
Remote Controller	(Wired Remote Included) (Wireless Remote Optional)
Temperature Control	IC Thermostat
Timer	72 Hr. On/Off
Night Setback	N/A
Air Louver, Horizontal	Manual
Air Louver, Vertical	Automatic
Power Failure Automatic Changeover	Built-In
Heating/Cooling Automatic Changeover	Built-In
Self-Diagnosis	Built-In
Air Filter	Washable, Anti-Mold

**Option**

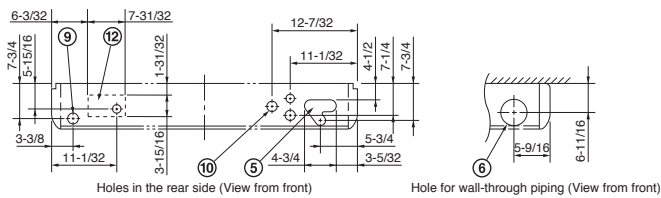
Refrigerant Line Set	Available
Fresh Air Intake	Knock-out
Air duct Extension	N/A
Indoor Frame Extension	N/A
Condensate Drain Pump	Optional Accessory
Non-Removeable Locking Remo-con Bracket	Available

**Operating Range**

	<b>Indoor Air Intake Temp</b>	<b>Outdoor Air Intake Temp</b>
Cooling (Max)	95F DB/71F WB	115F DB
Cooling (Min)	67 DB/57F WB	0F DB
Heating (Max)	80F DB/67F WB	75F DB/65F WB
Heating (Min)	-DB/-WB	5F DB

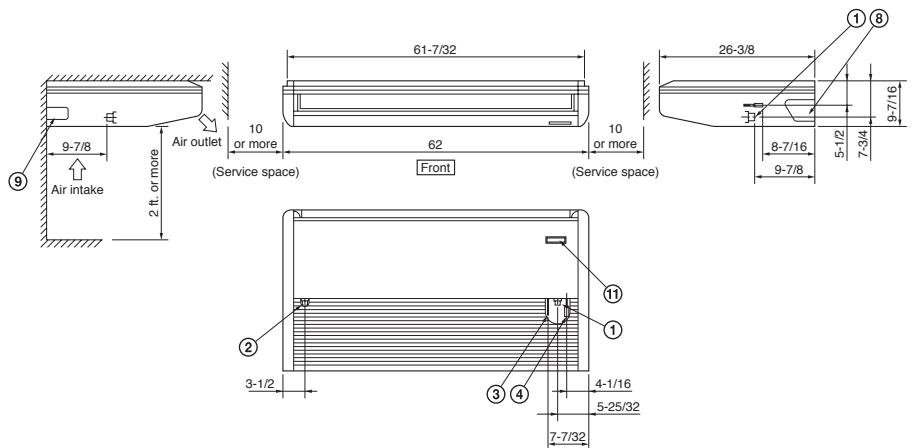
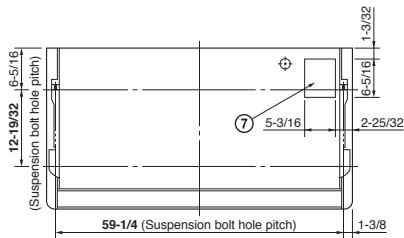


# Indoor Dimensions

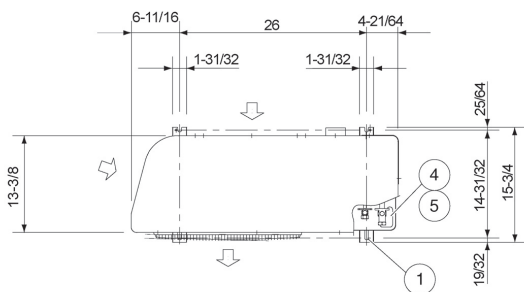


Dimension : inch

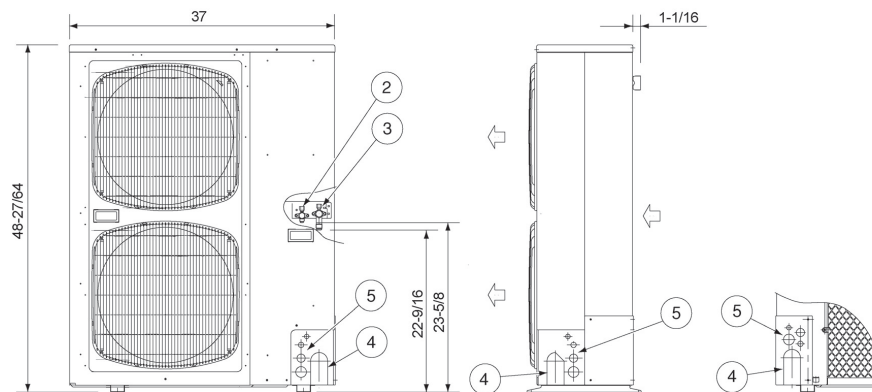
- ① Drain connection
- ② Drain connection for left side
- ③ Refrigerant liquid line (3/8") Flare connection
- ④ Refrigerant gas line (5/8") Flare connection
- ⑤ Hole for rear side refrigerant tubing
- ⑥ Hole for through-the-wall refrigerant tubing (ø3-15/16" hole)
- ⑦ Hole for fresh air intake (Knockout hole)
- ⑧ Hole for right side refrigerant tubing (Knockout hole)
- ⑨ Hole for left side drain connection (Knockout hole)
- ⑩ Hole for power supply (Conduit size 1/2")
- ⑪ Infrared rays receiver for wireless remote controller
- ⑫ Cutting position for fresh air intake



# Outdoor Dimensions



- |   |   |
|---|---|
| ① | Hole for anchor bolt (4-R6.5) / Anchor bolt: M10                              |
| ② | Refrigerant tube joint (liquid line tube) • Flare connection 3/8 in (9.52 mm) |
| ③ | Refrigerant tube joint (gas line tube) • Flare connection 5/8 in (15.88 mm)   |
| ④ | Refrigerant tubing inlet (knock-out hole)                                     |
| ⑤ | Power supply inlet (knock-out hole ø38, ø29, ø19, ø16 mm)                     |



Dimension: inch

