

## Split System Submittal Data

System: **26PET1U6** Indoor: **S-26PT1U6** Outdoor: **U-26PE1U6**  
 Single Split System - Ceiling-Suspended Heat Pumps

Job Name: \_\_\_\_\_  
 Location: \_\_\_\_\_  
 Engineer: \_\_\_\_\_  
 Submitted to: \_\_\_\_\_  
 Submitted by: \_\_\_\_\_  
 Reference: \_\_\_\_\_

Approval: \_\_\_\_\_  
 Date: \_\_\_\_\_  
 Construction: \_\_\_\_\_  
 Unit#: \_\_\_\_\_  
 Drawing#: \_\_\_\_\_

General Data	
<b>Power (V/P/Hz)</b>	<b>230/208/1/60</b>
Circuit Ampacity (A)	15-30 Indoor-Outdoor
Fuse Size, Max.(A)	15-30 Indoor-Outdoor
<b>Compressor</b>	<b>DC Rotary Inverter</b>
No. Used	1
R.L. Amps - L.R. (A)	12.9 - 17.5
Outdoor Unit	
Fan type	Propeller
Dia & Length (in.) - No. Speeds	18-7/64-1
Type Drive - No. Speeds	DC Motor
No. Poles (RPM)	8 - 800
No. Motors (W)	1 - 90
CFM (High)	1765
F.L. Amps (A)	13.8
<b>Coil Type</b>	<b>Aluminum Fin &amp; Copper Pipe</b>
Fin Type - Pipe Type	Slit Plate - Inner Rifled
Rows - F.P.I.	1 - 15.9
Face Area (sq.ft.)	7.26
Tube Size (in)	3/8"
Indoor Unit	
Fan type	Centrifugal
Dia & Length (in.) - No. Speeds	5-1/8-4
No. Speeds	3 & Auto
No. Poles (RPM, High)	4 - 1179
No. Motors (W)	1 - 31
CFM (Hi/Med/Lo)	550/490/460
Indoor Sound Rating (Hi) (dB-A)	39
F.L. Amps (A)	0.5
<b>Coil Type</b>	<b>Aluminum Plate Fin &amp; Copper Tube</b>
Fin Type - Pipe Type	Slit Plate - Inner Rifled
Rows - F.P.I.	3 - 14.9
Face Area (sq.ft.)	1.81
Tube Size (in)	9/32"
Drain Connection Size (in.)	1-1/4"



<b>Refrigerant</b>	<b>R410A</b>
Lbs. - R410a	4.19
Control	Electric Expansion Valve
Connection	Flare
Line Length, Max (ft.)	165
Line Difference, Max (ft.)	50 (outdoor lower), 100 (outdoor higher)
Line Size (in. O.D. Discharge)	3/8"
Line Size (in. O.D. Suction)	5/8"
Dimensions (HxWxD)	
Indoor Unit (Crated) (in.)	9-7/16 x 54-19/32 x 31-1/16
Indoor Unit (Uncrated) (in.)	7-17/16 x 51-3/16 x 26-3/8
Outdoor Unit (Crated) (in.)	34-31/32 x 39-31/32 x 16-3/32
Outdoor Unit (Uncrated) (in.)	30-23/32 x 37 x 13 3/8
Weight (lbs.)	
(Indoor) Net	64
(Indoor) Shipping	75
(Outdoor) Net	128
(Outdoor) Shipping	148
(Indoor) Shipping Volume (cu.ft.)	8.9
(Outdoor) Shipping Volume (cu.ft.)	13

Performance Data @ ARI Standard Conditions (230V)	
<b>Cooling</b>	
Total Capacity (BTU/H)	24,400 (9,500 - 24,400)
Sensible Capacity (BTU/H)	14,330
Latent Capacity (BTU/H)	10,070
SEER	14.5
Dehumidification (Pints/H)	7.7
Amps (A)	15.6/17.3
Power Inputs (W)	2,880/2,880
Outdoor Sound Rating (dB-A)	49
<b>Heating</b>	
Total Capacity (BTU/H)	30,800 (8,000 - 30,800)
HSPF	10.3
Amps (A)	16.4/18.1
Max Amps (A)	16.4/18.1
Power Inputs (W)	3,000/3,000
Back-up Strip Heater (KW)	0.00/0.00
Outdoor Sound Rating (dB-A) High	49

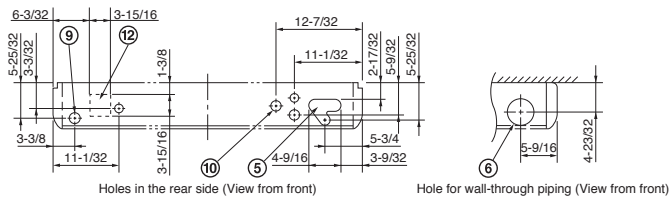
Features	
Controls	Microprocessor
Remote Controller	LCD Wired Type, Temp. Sensor Built in
Temperature Control	IC Thermostat
Timer	72 Hr. On/Off
Night Setback	Built-In
Air Louver, Horizontal	Manual
Air Louver, Vertical	Automatic
Power Failure Automatic Changeover	Built-In
Heating/Cooling Automatic Changeover	Built-In
Self-Diagnosis	Built-In
Air Filter	Washable, Anti-Mold

Option	
Refrigerant Line Set	Available
Fresh Air Intake	Knock-out
Air duct Extension	N/A
Indoor Frame Extension	N/A
Condensate Drain Pump	Available
Non-Removeable Remo-con Bracket	Available

Operating Range	Indoor Air Intake Temp	Outdoor Air Intake Temp
Cooling (Max)	95F DB/71F WB	115F DB
Cooling (Min)	67 DB/57F WB	0F DB
Heating (Max)	80F DB/67F WB	75F DB/65F WB
Heating (Min)	-DB/-WB	5F DB



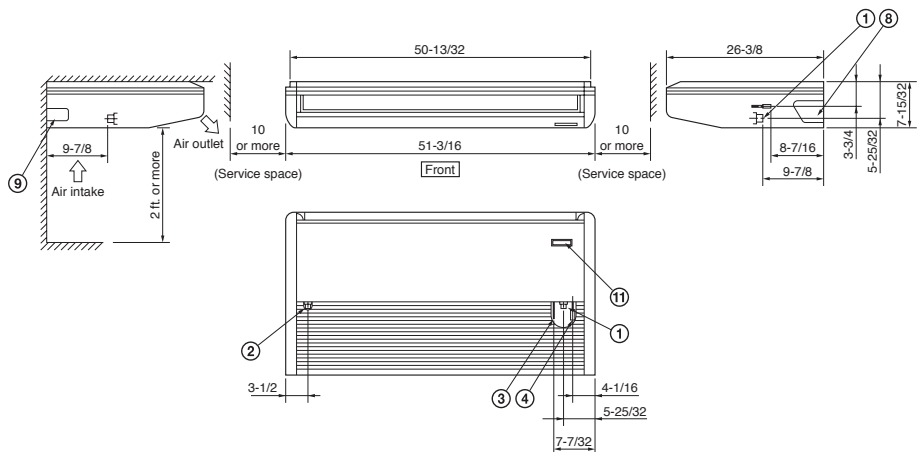
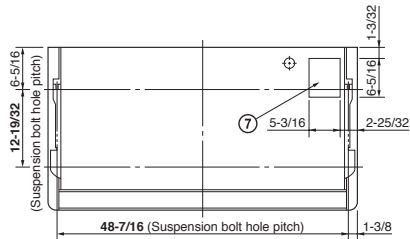
# Indoor Dimensions



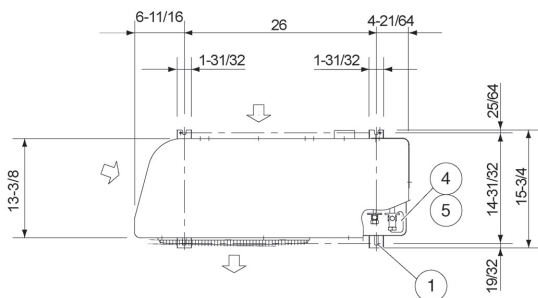
Dimension : inch

- ① Drain connection
- ② Drain connection for left side
- ③ Refrigerant liquid line (3/8") Flare connection
- ④ Refrigerant gas line (5/8") Flare connection
- ⑤ Hole for rear side refrigerant tubing
- ⑥ Hole for through-the-wall refrigerant tubing (ø3-15/16" hole)
- ⑦ Hole for fresh air intake (Knockout hole)
- ⑧ Hole for right side refrigerant tubing (Knockout hole)
- ⑨ Hole for left side drain connection (Knockout hole)
- ⑩ Hole for power supply (Conduit size 1/2")
- ⑪ Infrared rays receiver for wireless remote controller
- ⑫ Cutting position for fresh air intake

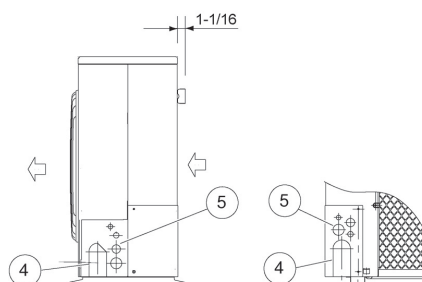
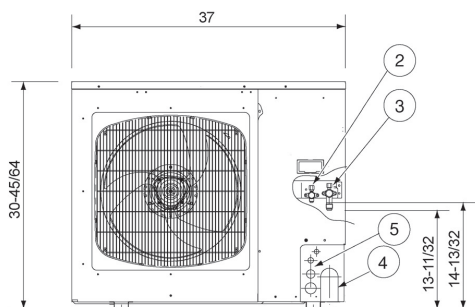
1919\_THS\_J



# Outdoor Dimensions



- |   |   |
|---|---|
| ① | Hole for anchor bolt (4-R6.5) / Anchor bolt: M10                              |
| ② | Refrigerant tube joint (liquid line tube) • Flare connection 3/8 in (9.52 mm) |
| ③ | Refrigerant tube joint (gas line tube) • Flare connection 5/8 in (15.88 mm)   |
| ④ | Refrigerant tubing inlet (knock-out hole)                                     |
| ⑤ | Power supply inlet (knock-out hole ø38, ø29, ø19, ø16 mm)                     |



Dimension : inch

